

FORAGE

Land Management Information System

<https://www.longpaddock.qld.gov.au/forage>

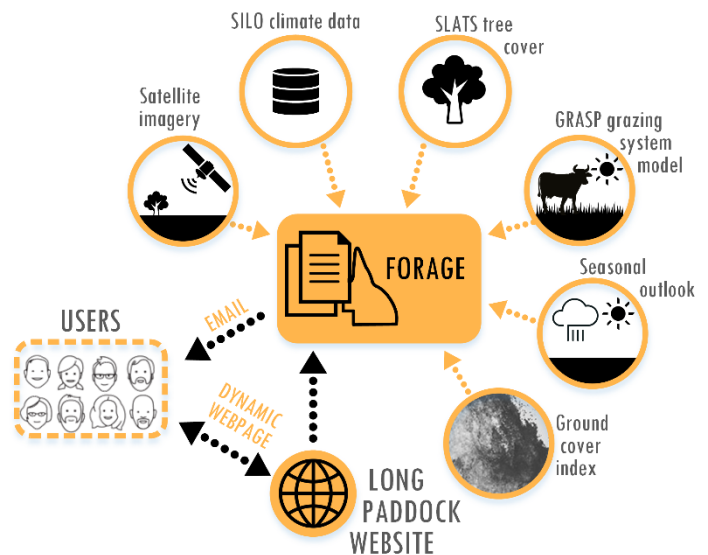
Quick user guide

12 property-scale reports and maps that:

- access the latest grazing science for property management.
- track ground cover, pasture growth and climate.
- assist with stocking rate decisions.
- let you obtain Landsat satellite imagery derived products.
- examine climate projections for your property and region.
- are useful for graziers, extension, consultants, policy developers, agribusiness and education.
- are free and simple to understand.
- are designed for regional use – yes, lower bandwidth internet-friendly!

What is FORAGE?

- **FORAGE** generates and delivers information for land management as customised reports.
- FORAGE combines information such as **SILO climate data**, satellite imagery and modelled pasture growth/land condition indicators.
- For properties over 1 ha in area.
- Reports can be requested by property name, road address, Lots on Plan, map view or Latitude and Longitude.
- For adjoining holdings, enter multiple Lots on Plan.
- Delivered to the user by email as PDF property-scale reports.
- See short videos on how you might use FORAGE for grazing land management decision making.



FORAGE flow diagram

How you can obtain FORAGE reports and products

1. Visit the Long Paddock website or scan the QR code.
2. Select report(s) of interest on the FORAGE report request page.
3. Enter/Select your property (i.e. Lot/s on Plan, name, address, or from map view).
4. Add ancillary information if required, (e.g. season, year), label and email address in the relevant fields – click 'submit' to send your request.
5. A PDF report (or link to the product requested) will be sent to the email address you provided.



<https://www.longpaddock.qld.gov.au/forage>

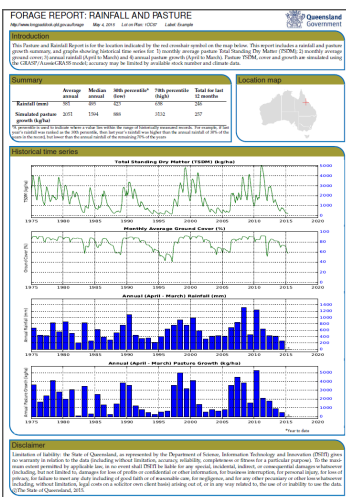
See the [Report information](#) or [FORAGE User Guide](#) for more detail.

NB. Processing requests can range (10 minutes to a few hours), depending on the report complexity and system activity.

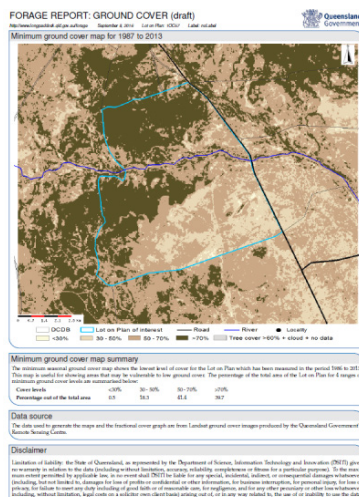
What FORAGE reports are available?

- **Rainfall and Pasture:** provides recent and historical rainfall, pasture growth and pasture ground cover.
- **Rainfall and Pasture by Land Type:** for recent and historical rainfall, pasture growth and pasture ground cover for individual land types.
- **Indicative Land Types:** shows area and proportion of dominant land types within selected Lot/s on Plan.
- **Ground Cover (2 types)**
 - Standard: includes a seasonal ground cover map for your choice of year and season and a minimum ground cover map indicating the lowest ground cover (per satellite pixel) for your selected Lot/s on Plan since 1990.
 - Regional Comparison: determines ground cover levels over time for the dominant land types for selected Lot/s on Plan relative to the same land types on similar land tenures in the local region (25km radius).
- **Rainfall and Pasture Growth Outlook:** gives a three-month seasonal outlook commencing in the month the report is requested – relevant to the immediate district surrounding the selected Lot on Plan.
- **Crop Frequency and type (NEW):** (major inland cropping regions): displays the 10-year crop frequency and type plus summer/winter satellite images.
- **Drought Assessment:** arranges multiple diagnostic maps for a shire/regional council and adjoining regions.
- **Erodible Soils** (Burdekin, Fitzroy regions): how likely soils are susceptible to erosion through 3 maps.
- **Foliage Projective Cover (FPC):** provides tree and shrub FPC classes obtained from the most recent satellite imagery.
- **Fire Scar (NEW):** a range of fire scar maps and graphs describing fire scar seasonal distribution, fires detected in different years and fuel load information.
- **Regional Climate Projections:** offers historical and projected climate information for 2030, 2050 and 2070 using the SILO climate dataset and Consistent Climate Scenarios (CCS) projections data.

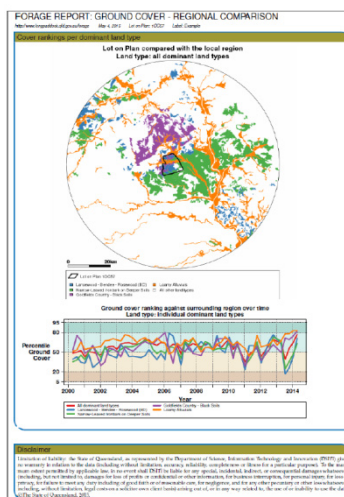
Report examples



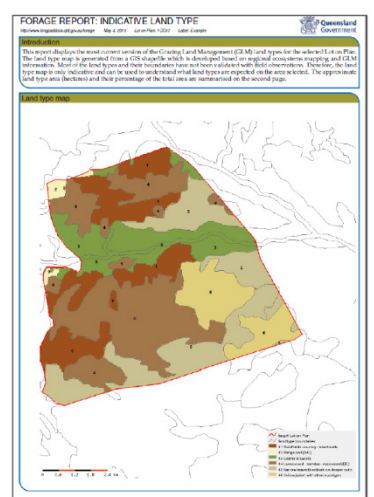
Rainfall Pasture Report



Ground Cover Report



Regional Comparison Ground Cover Report



Indicative Land type Report

Questions / Comments

Grant Stone

grant.stone@qld.gov.au

Science Delivery - Department of Environment and Science.

EcoSciences Precinct, Dutton Park, Queensland 4102.

Baisen Zhang

baisen.zhang@qld.gov.au

