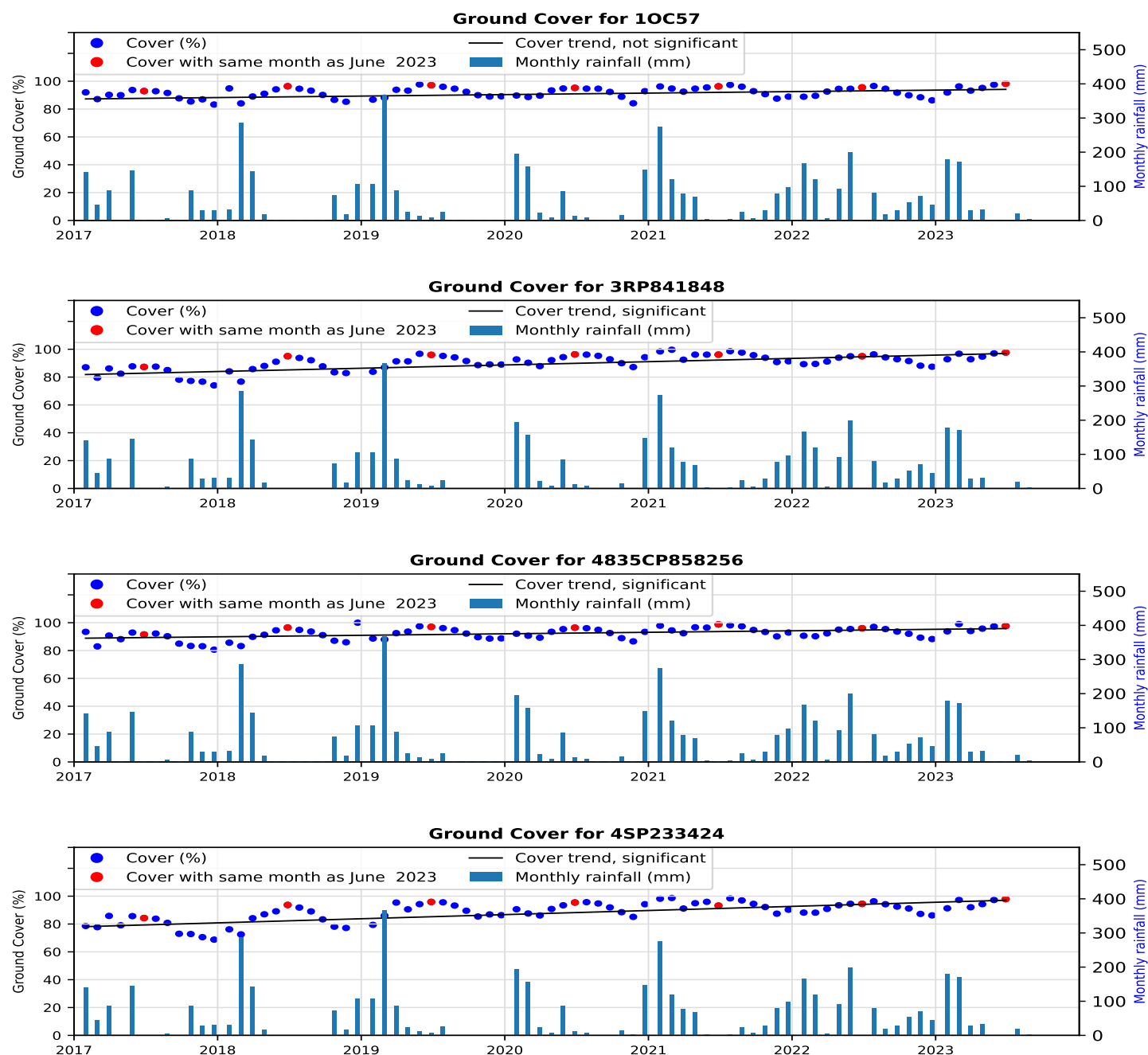


## Paddock ground cover information

This report presents monthly ground cover time series graphs (2017 to present) for selected Lots on plan, including the percentage area of each ground cover level within a Lot on plan as at June 2023. The cover trend for the period is also shown for each paddock time series - as 'significant' (i.e. a rising or falling trend) or 'not significant' (i.e. no significant change in trend). The trend is calculated by fitting a linear regression between time and the monthly ground cover values.

## Time series of monthly ground cover graph for Lot on plan



Ground cover percentage area summary for Lot on plan

The table below shows the percentage area of each ground cover level within a Lot on plan (out of the total area of the Lot on plan) as at June 2023 for six ranges of ground cover levels.

Lot on plan	Area (ha)	Cover levels (%)					
		<15%	15 - 30%	30 - 50%	50 - 70%	70 - 90%	>90%
1OC57	6919.6	0.0	0.0	0.0	0.1	3.1	96.7
3RP841848	5650.1	0.0	0.0	0.0	0.3	6.1	93.6
4835CP858256	18990.4	0.0	0.0	0.0	0.3	5.4	94.3
4SP233424	4621.7	0.0	0.0	0.0	0.1	6.8	93.1