

FORAGE REPORT: GROUND COVER

<http://www.longpaddock.qld.gov.au/forage>

04/08/2023

Lot on Plan: 1OC57,4835CP858256,3RP841848,4SP etc.

Label: spyglass



Queensland
Government

Introduction

This report presents three ground cover information products: (1) a ground cover map for the chosen month; (2) a minimum ground cover map for the period 1990 to 2016; (3) a total cover percentile map, and (4) a graph showing the historical time series of seasonal ground cover. The maps and historical time series graph are generated from the ground cover products which are produced by the Queensland Government's Remote Sensing Centre using Landsat satellite image data from the United States Geological Survey and Sentinel-2 data from the European Space Agency. For more information on how ground cover products are created, visit <https://www.qld.gov.au/environment/land/management/mapping/statewide-monitoring/groundcover>.

Background information of the Lot on Plan

Latitude/longitude: -19.42/145.73

Total land area : 36182 ha

Long-term annual mean temperature : 23.3 °C

Last 12-month rainfall : 650.3 mm

Local government: Charters Towers Regional

Average woody vegetation cover: 19.3%

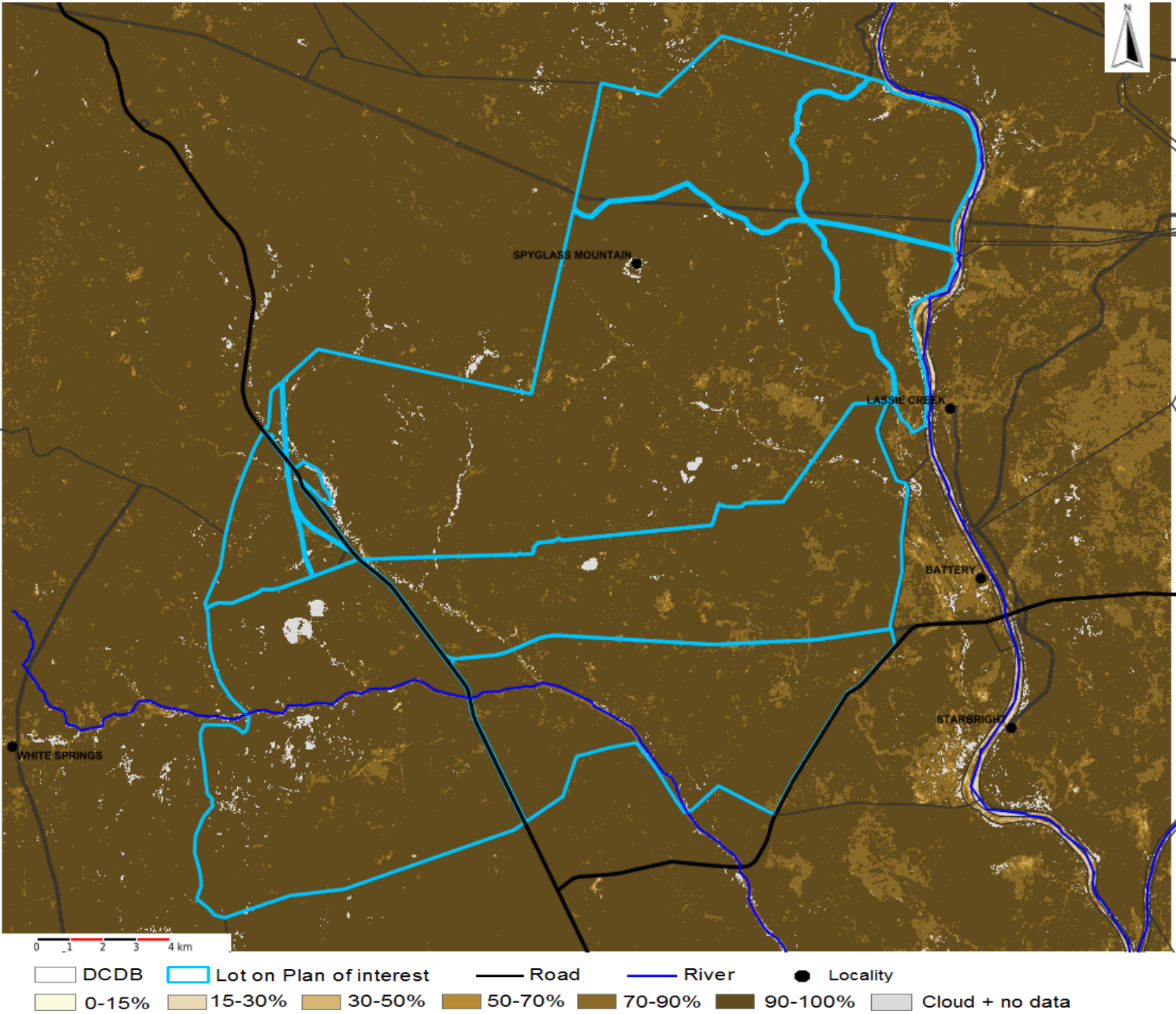
Long-term annual mean rainfall : 635.9 mm

Last month rainfall: 22.0 mm

Location map



Ground cover map (The image is for June 2023)

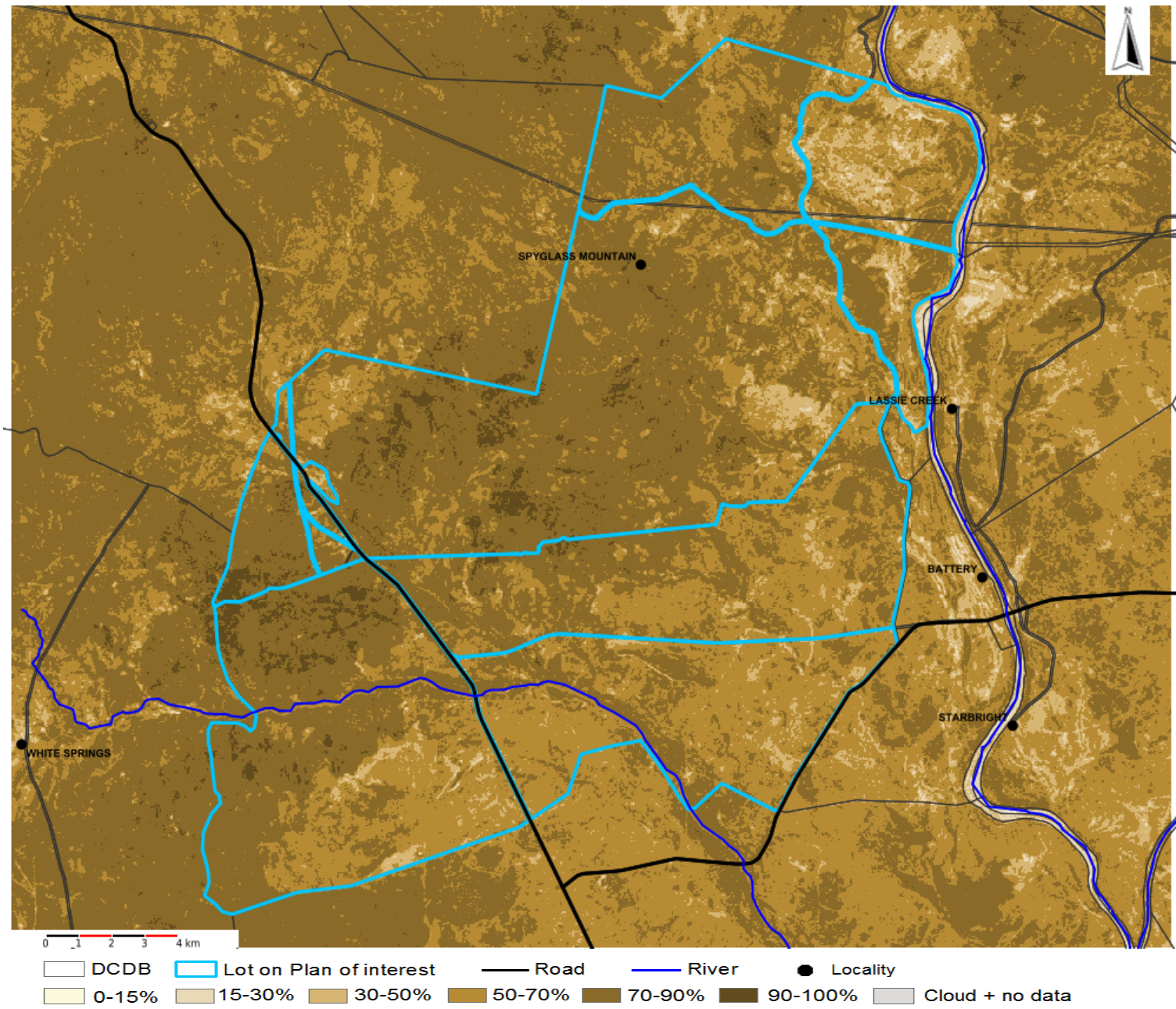


Ground cover map summary

The monthly ground cover map shows the level of ground cover for areas on the Lot on Plan with less than 60% tree cover. The image is for June 2023. The percentage of the total area of the Lot on Plan for 6 ranges of ground cover levels are summarised below:

Cover levels	<15%	15 - 30%	30 - 50%	50 - 70%	70 - 90%	>90%
Percentage out of the total area	0.0	0.0	0.0	0.2	5.3	94.5

Minimum ground cover map for 1990 to 2020

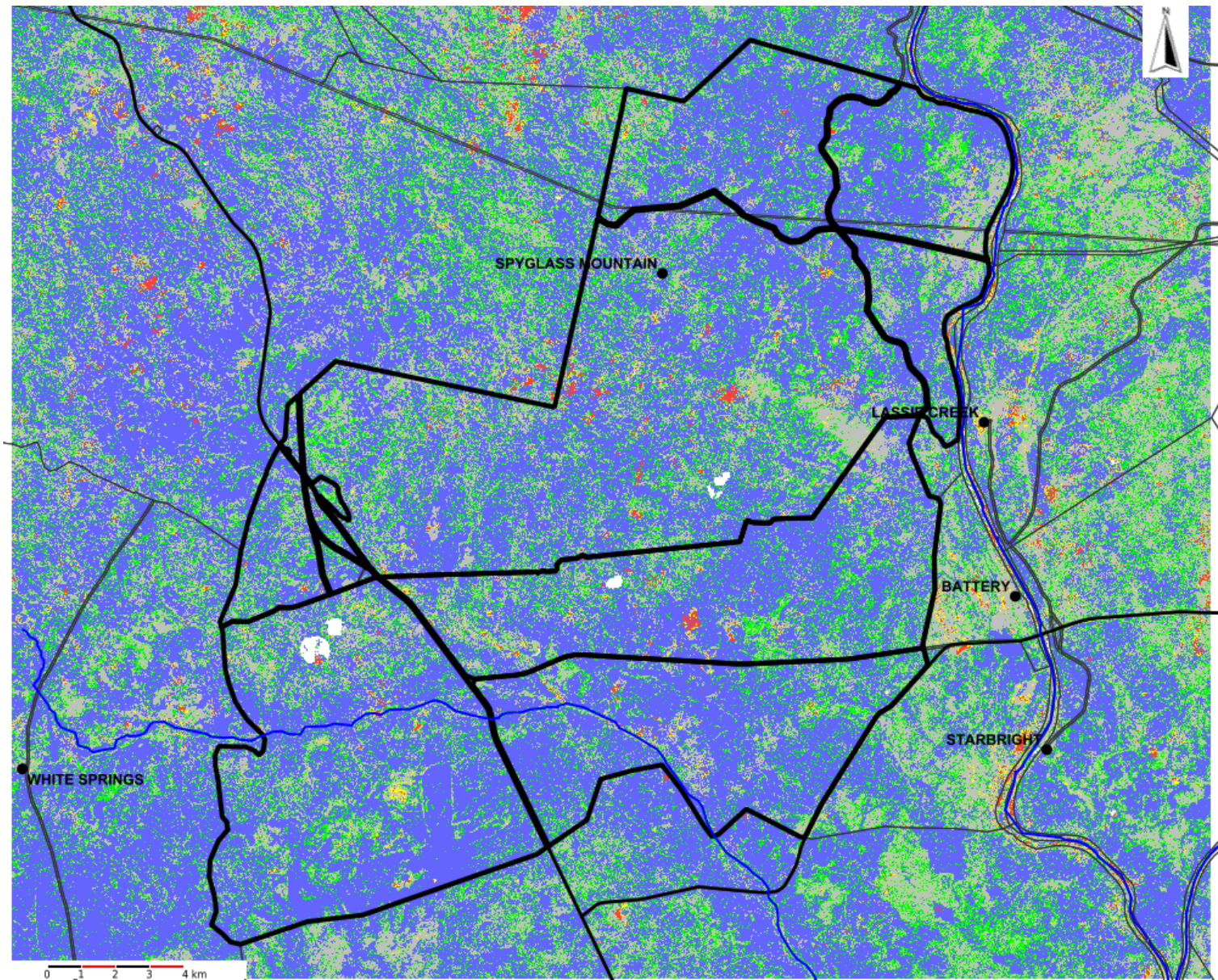


Minimum ground cover map summary

The minimum ground cover map shows the lowest level of cover for the Lot on Plan which has been measured in the period 1990 to 2020. This map is useful for showing areas that may be vulnerable to low ground cover. The percentage of the total area of the Lot on Plan for 6 ranges of minimum ground cover levels are summarised below:

Cover levels	<15%	15 - 30%	30 - 50%	50 - 70%	70 - 90%	>90%
Percentage out of the total area	0.0	0.2	4.7	36.6	55.2	3.3

Total cover percentile map for June 2023 (relative to all June covers from 1990-current)



The median total cover percentile for the selected area: 100th

DCDB

Lot on Plan of interest

Road

River

Locality

No data

Percentile:

10

20

30

40-70

80

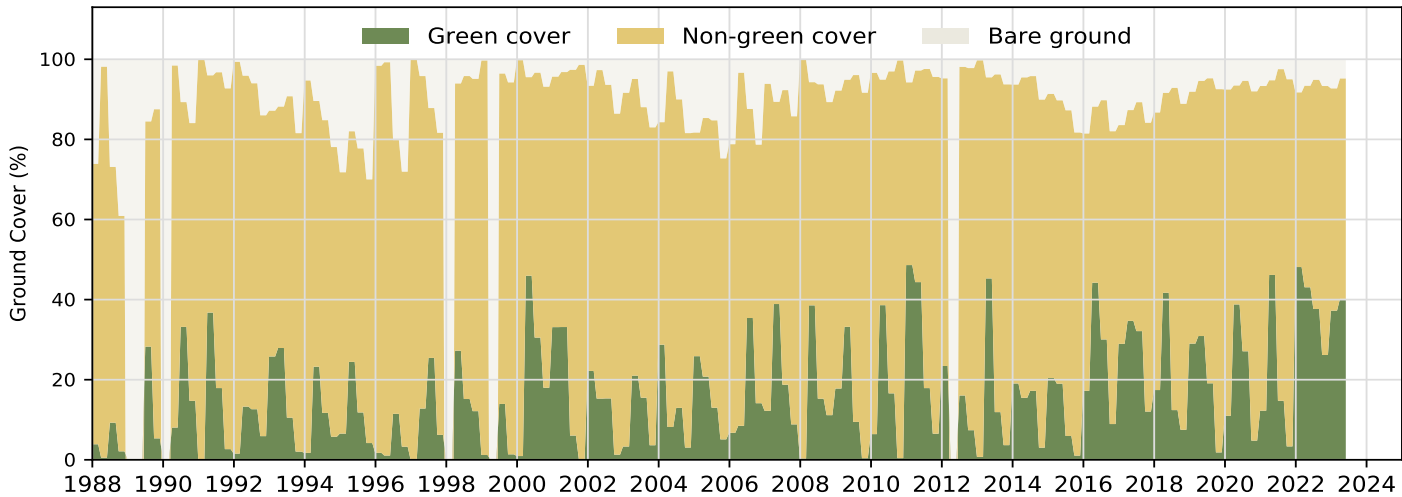
90

100

How to interpret the total cover percentile map

The above map was generated from Landsat/Sentinel images which compares, at the pixel level (30m), the total cover (trees, grass and litter) for the month indicated, against the long term (from 1990) total cover for the same month. For each pixel, all cover values over the entire time-series of monthly images are classified into percentiles (from lowest 1 to highest 100). The cover value for the pixel in the month indicated is then classified according to the percentile in which it falls. The map helps to identify areas of low, medium or high total cover, during the month indicated. **Any areas with yellow, orange or red colour on the map indicate that the total cover for these areas are ranked at the bottom of those same months in history.** Percentile variability can be caused by run-on and run-off areas, response to soil type (e.g. sand vs clay), local rainfall variability, grazing effect, tree response to rainfall, tree grass competition, cropping and tree clearing.

Seasonal ground cover time series graph



About the seasonal ground cover time series graph

The time series graph shows the seasonal levels of ground cover for the Lot on Plan from 1988 to last season. The ground cover level is also separated in the green and non-green components of the total level of ground cover. Gaps may occur on the graph where there was insufficient satellite data to derive a valid seasonal estimate of ground cover (e.g. due to persistent cloud over a season).

Disclaimer

Limitation of liability: the State of Queensland, as represented by the Department of Environment and Science (DES) gives no warranty in relation to the data (including without limitation, accuracy, reliability, completeness or fitness for a particular purpose). To the maximum extent permitted by applicable law, in no event shall DES be liable for any special, incidental, indirect, or consequential damages whatsoever (including, but not limited to, damages for loss of profits or confidential or other information, for business interruption, for personal injury, for loss of privacy, for failure to meet any duty including of good faith or of reasonable care, for negligence, and for any other pecuniary or other loss whatsoever including, without limitation, legal costs on a solicitor own client basis) arising out of, or in any way related to, the use of or inability to use the data. ©The State of Queensland, 2023.