

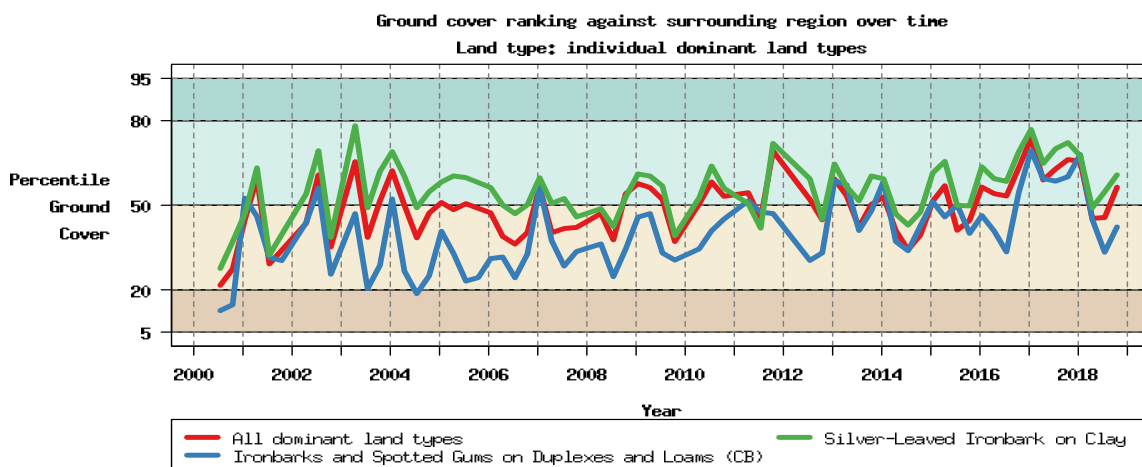
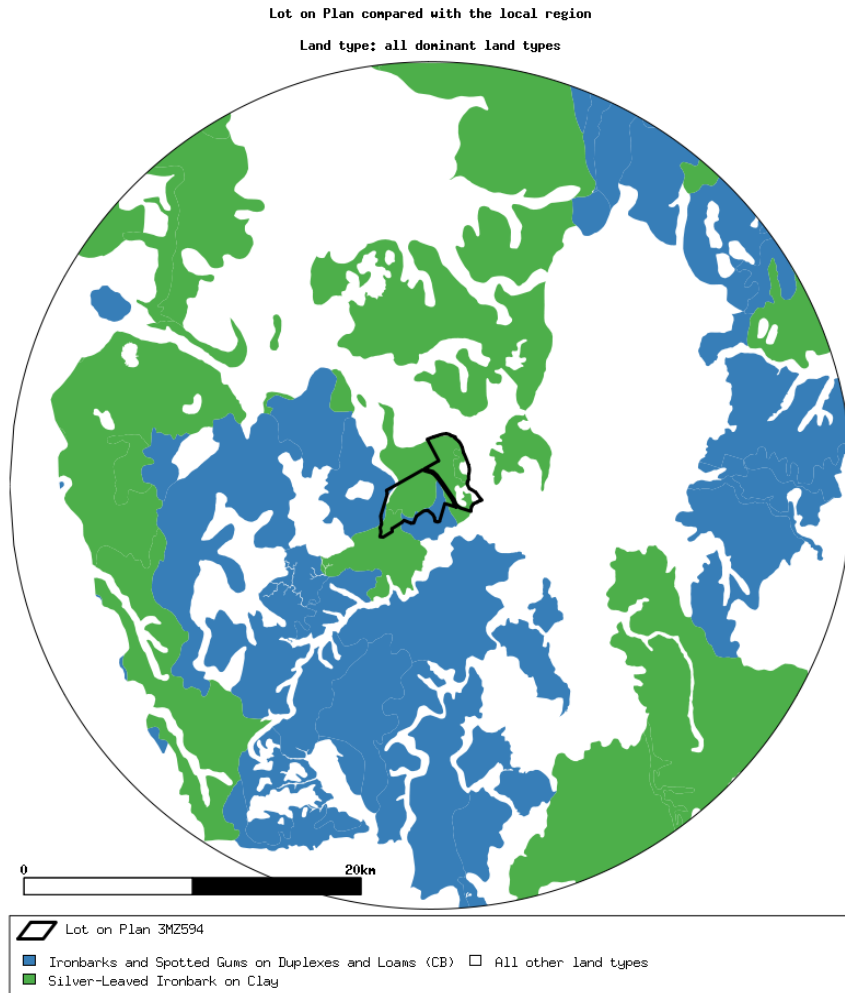
FORAGE REPORT: GROUND COVER - REGIONAL COMPARISON

<http://www.longpaddock.qld.gov.au/forage> February 21, 2019 Lot on Plan: 3MZ594 Label: test

Introduction

This report presents a regional comparison of the ground cover levels for the dominant Grazing Land Management (GLM) land types on the selected Lot on Plan. The information about cover levels is generated from seasonal ground cover data derived from satellite imagery and calibrated by field measurements. If there are limited satellite data available for periods when there is too much cloud, ground cover is estimated based on the long term pattern of cover compared with the surrounding area. These estimates are indicated by the dotted line on the cover plot.

Cover rankings per dominant land type






Disclaimer

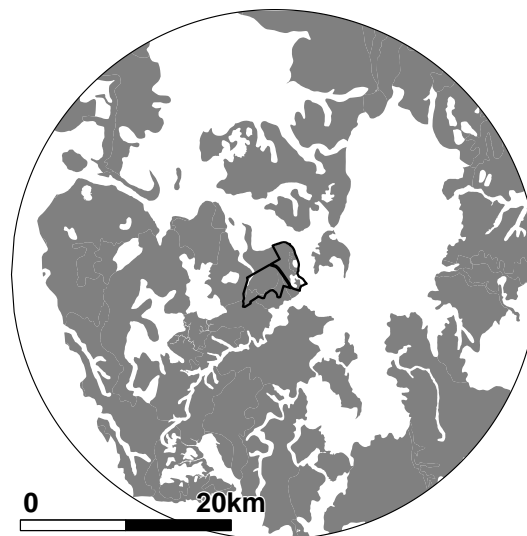
Limitation of liability: the State of Queensland, as represented by the Department of Environment and Science (DES) gives no warranty in relation to the data (including without limitation, accuracy, reliability, completeness or fitness for a particular purpose). To the maximum extent permitted by applicable law, in no event shall DES be liable for any special, incidental, indirect, or consequential damages whatsoever (including, but not limited to, damages for loss of profits or confidential or other information, for business interruption, for personal injury, for loss of privacy, for failure to meet any duty including of good faith or of reasonable care, for negligence, and for any other pecuniary or other loss whatsoever including, without limitation, legal costs on a solicitor own client basis) arising out of, or in any way related to, the use of or inability to use the data. ©The State of Queensland, 2019.

Cover values for all dominant land types

Regional land type comparison – ground cover Land type: all dominant land types

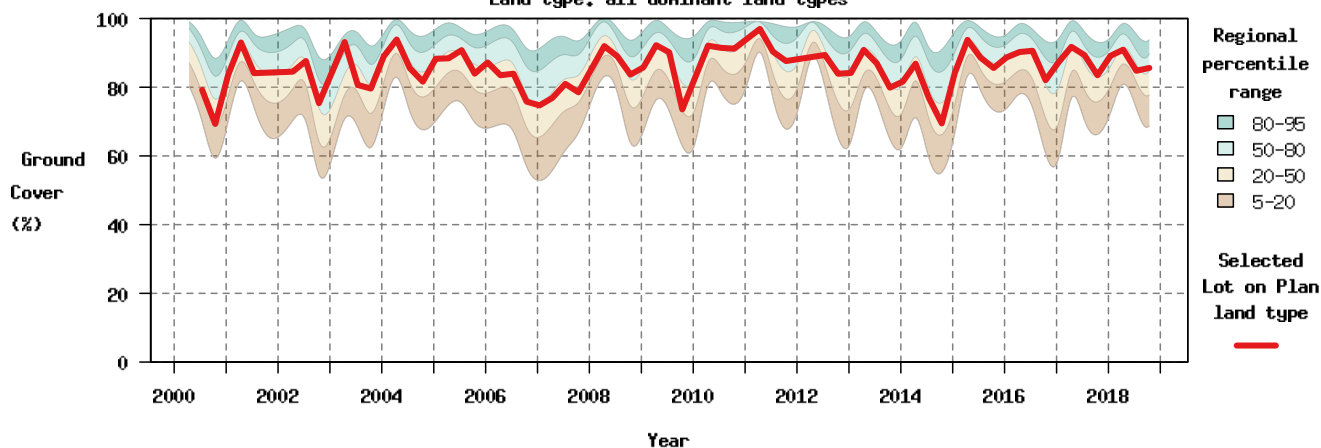
Selected property and surrounding region (25km radius)

-  Lot on Plan
-  Selected landtype in region
-  All other land types



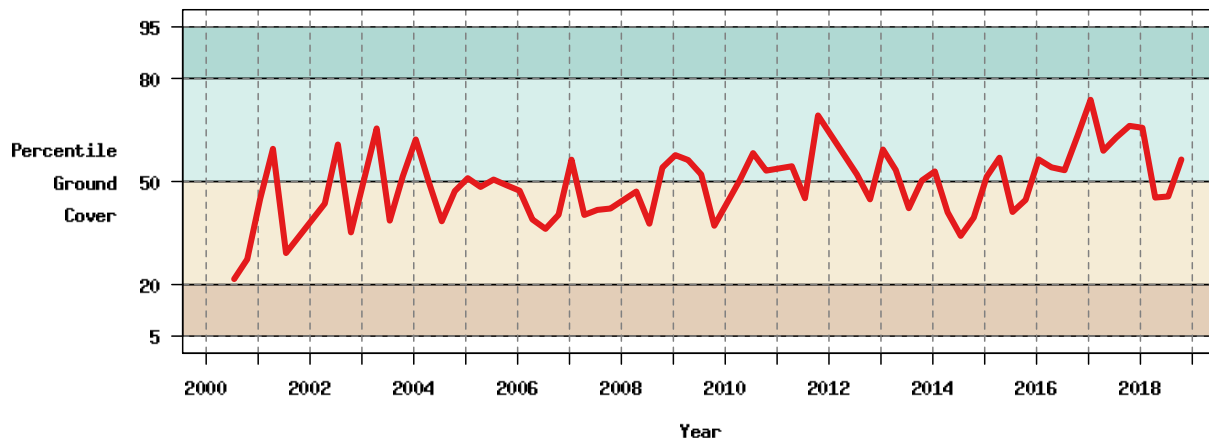
Regional land type comparison – percent ground cover

Land type: all dominant land types



Ground cover ranking against surrounding region over time




Land type: all dominant land types

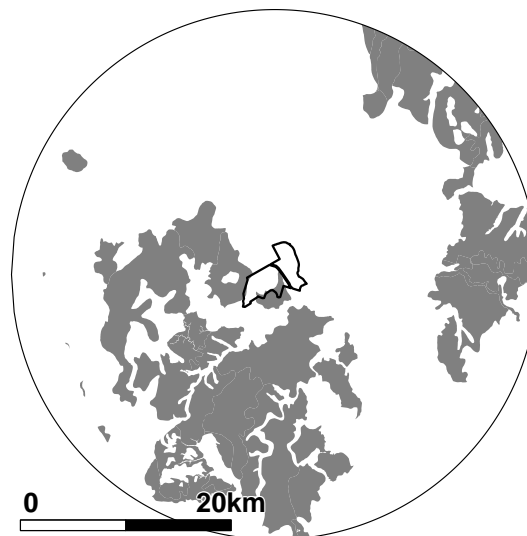


Cover values for dominant land type 1

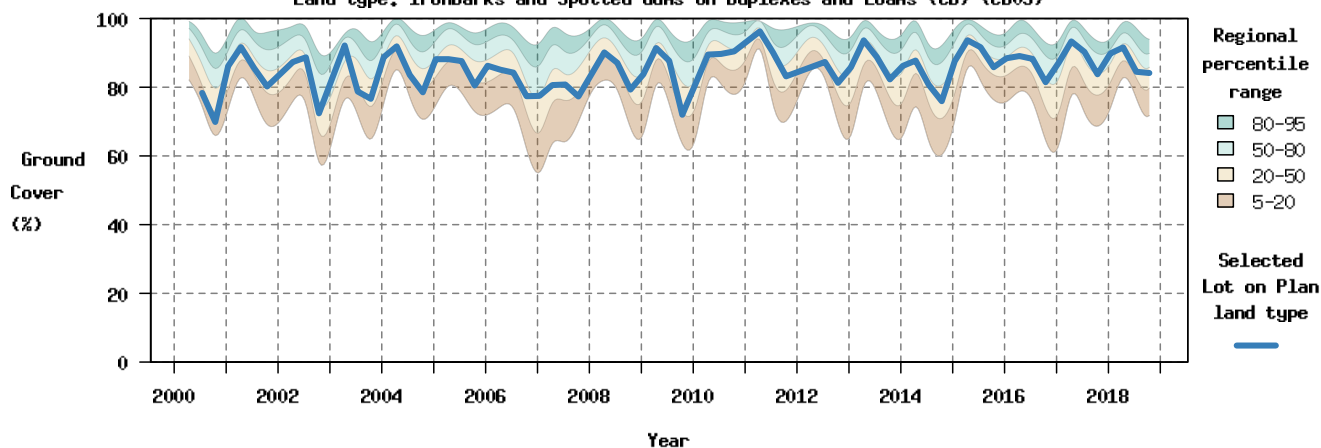
Regional land type comparison – ground cover Land type: Ironbarks and Spotted Gums on Duplexes and Loams (CB) (CB09)

Selected property and surrounding region (25km radius)

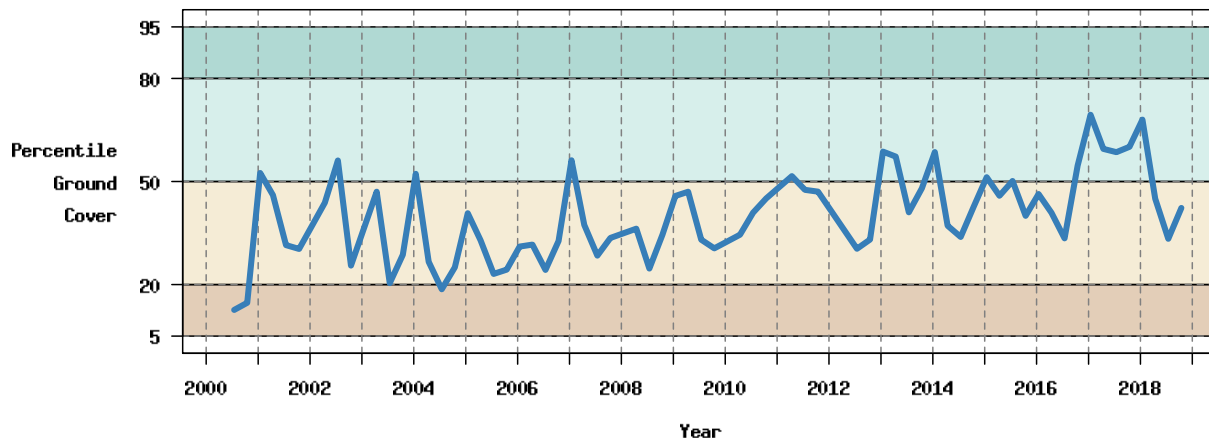
-  Lot on Plan
-  Selected landtype in region
-  All other land types



Regional land type comparison – percent ground cover Land type: Ironbarks and Spotted Gums on Duplexes and Loams (CB) (CB09)






Ground cover ranking against surrounding region over time Land type: Ironbarks and Spotted Gums on Duplexes and Loams (CB) (CB09)



Cover values for dominant land type 2

Regional land type comparison – ground cover Land type: Silver-Leaved Ironbark on Clay (IB16)

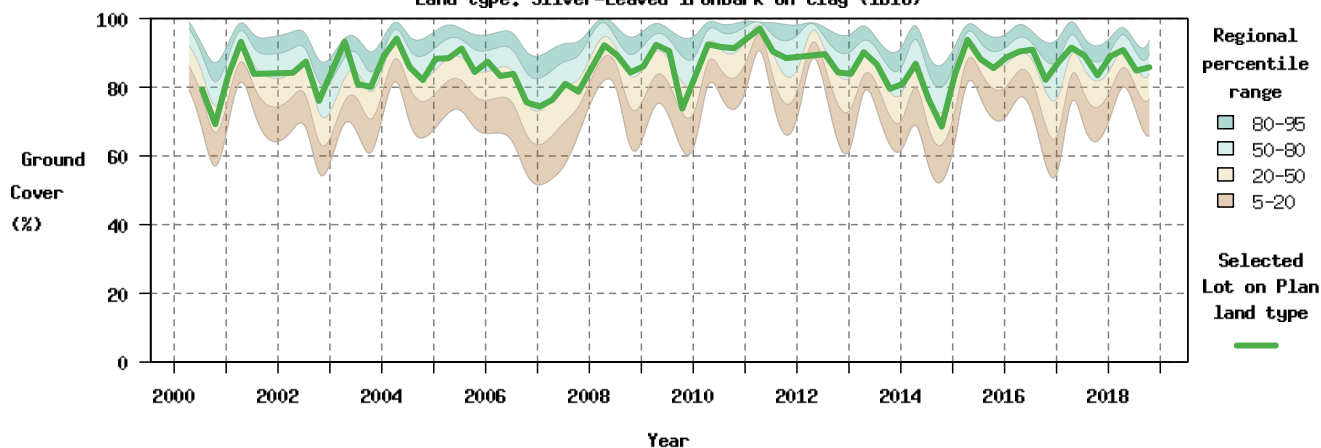
Selected property and surrounding region (25km radius)

-  Lot on Plan
-  Selected landtype in region
-  All other land types



Regional land type comparison – percent ground cover

Land type: Silver-Leaved Ironbark on Clay (IB16)



Ground cover ranking against surrounding region over time

Land type: Silver-Leaved Ironbark on Clay (IB16)

