

FORAGE REPORT: GROUND COVER - REGIONAL COMPARISON

<http://www.longpaddock.qld.gov.au/forage>

23/05/2023

Lot on Plan: 10C57,4SP233424,4835CP858256,3RP etc.

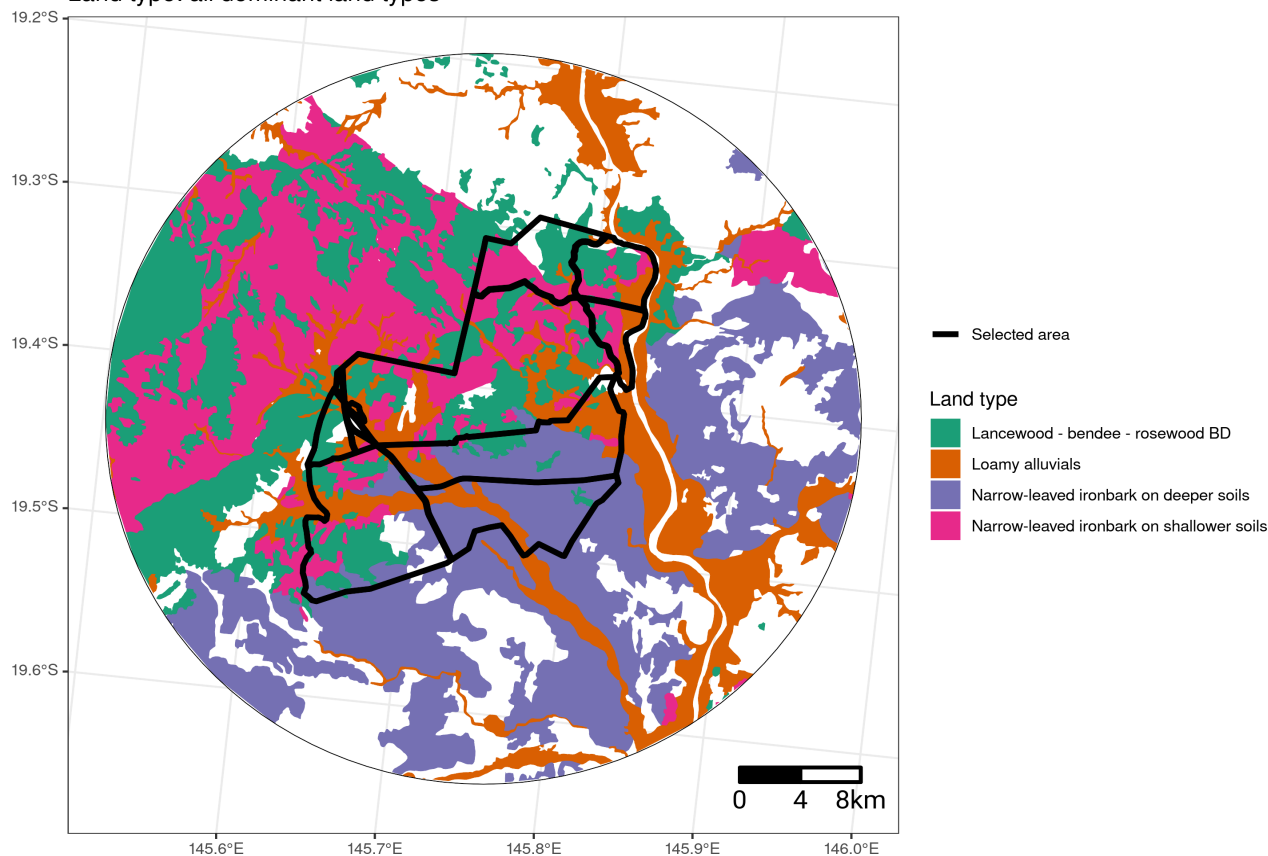
Label: spyglass

Introduction

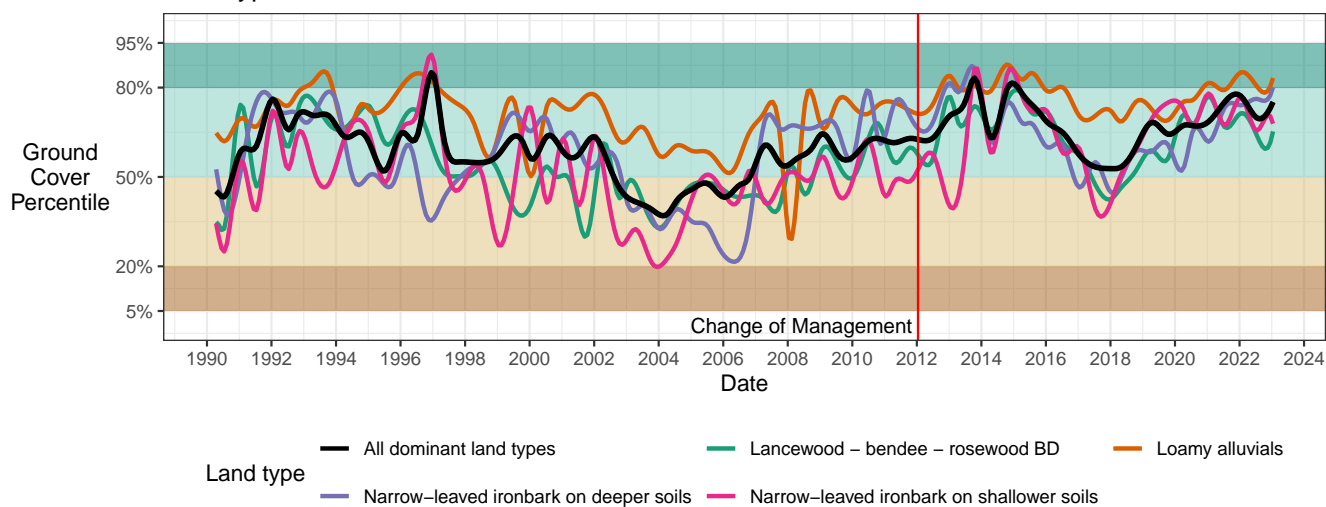
This report presents a regional comparison of the ground cover levels for the dominant Grazing Land Management (GLM) land types on the selected area. The information about cover levels is generated from seasonal ground cover data derived from satellite imagery and calibrated by field measurements. If there are limited satellite data available for periods when there is too much cloud, ground cover is estimated based on the long term pattern of cover compared with the surrounding area. If significant management change date and significant ownership change date are provided, they will be displayed on all the cover graphs.

Cover rankings per dominant land type

Selected area compared with the local region
Land type: all dominant land types



Ground cover ranking against surrounding region over time
Land type: Each Dominant

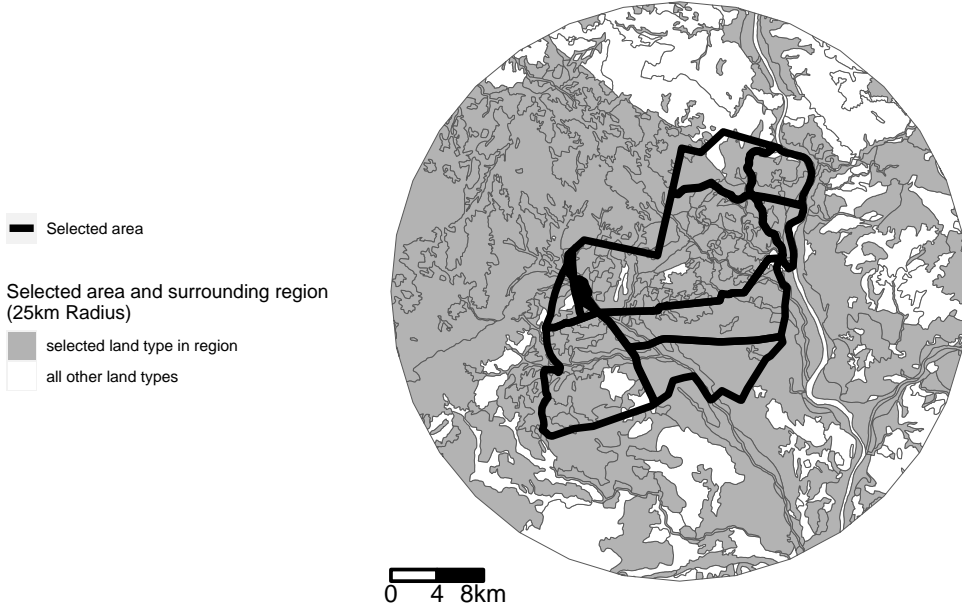


Disclaimer

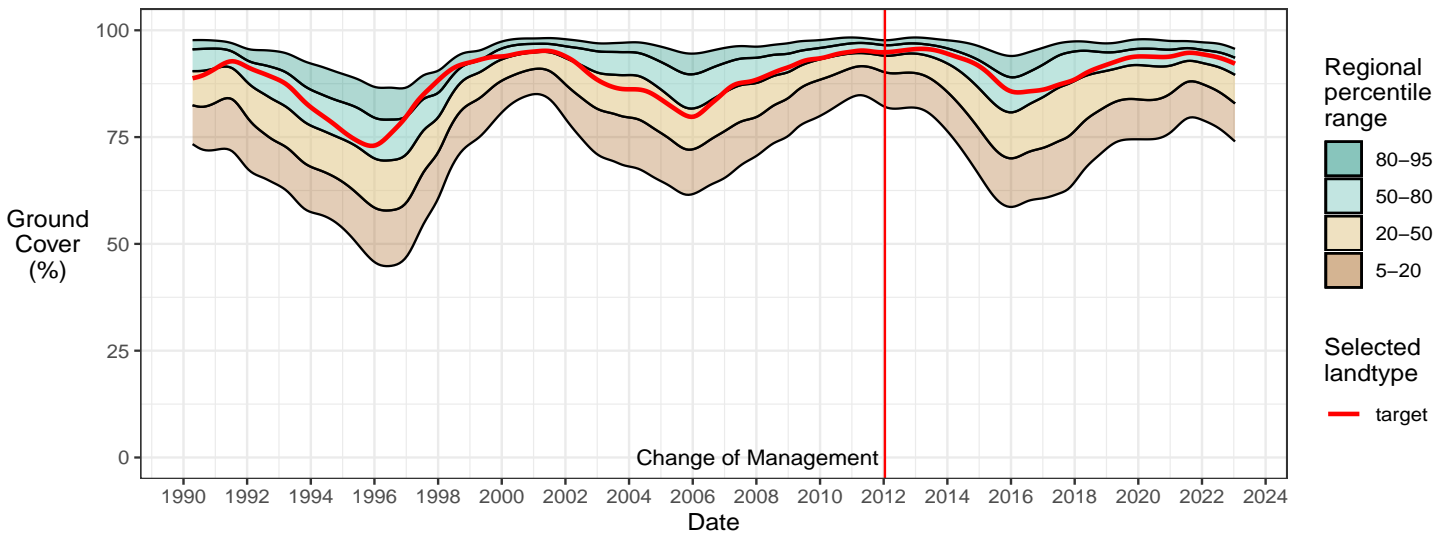
Limitation of liability: the State of Queensland, as represented by the Department of Environment and Science (DES) gives no warranty in relation to the data (including without limitation, accuracy, reliability, completeness or fitness for a particular purpose). To the maximum extent permitted by applicable law, in no event shall DES be liable for any special, incidental, indirect, or consequential damages whatsoever (including, but not limited to, damages for loss of profits or confidential or other information, for business interruption, for personal injury, for loss of privacy, for failure to meet any duty including of good faith or of reasonable care, for negligence, and for any other pecuniary or other loss whatsoever including, without limitation, legal costs on a solicitor own client basis) arising out of, or in any way related to, the use of or inability to use the data. ©The State of Queensland, 2023.

Cover values for all dominant land types

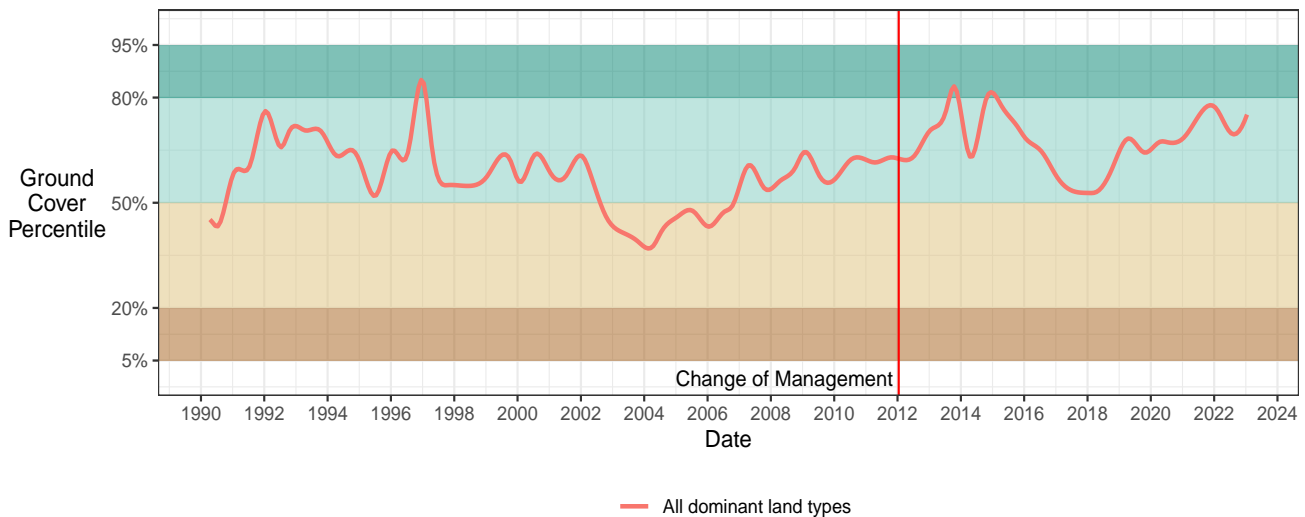
Regional land type comparison ... ground cover
Land type: Overall



Regional land type comparison – percent ground cover
Land type: Overall

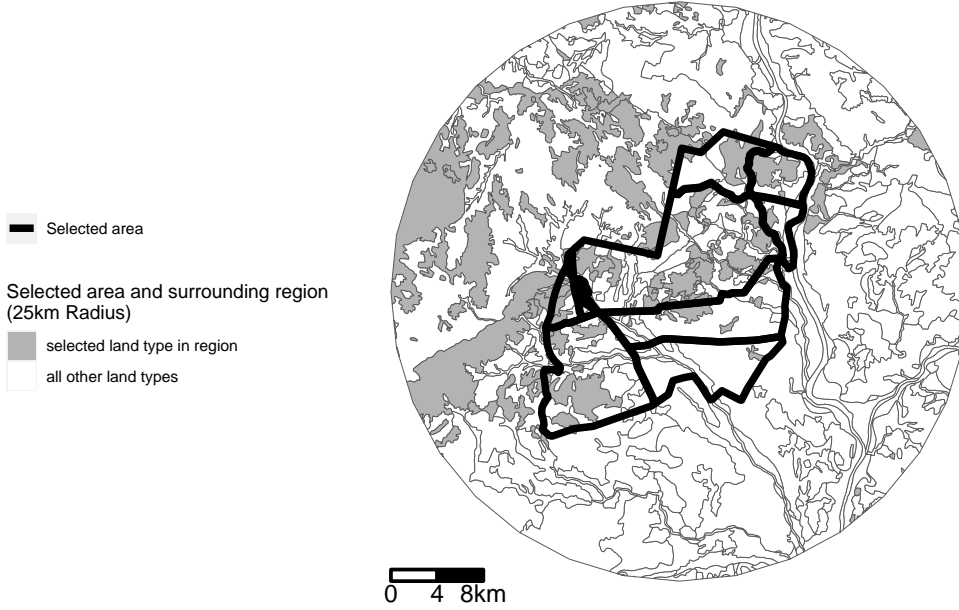


Ground cover ranking against surrounding region over time
Land type: Overall

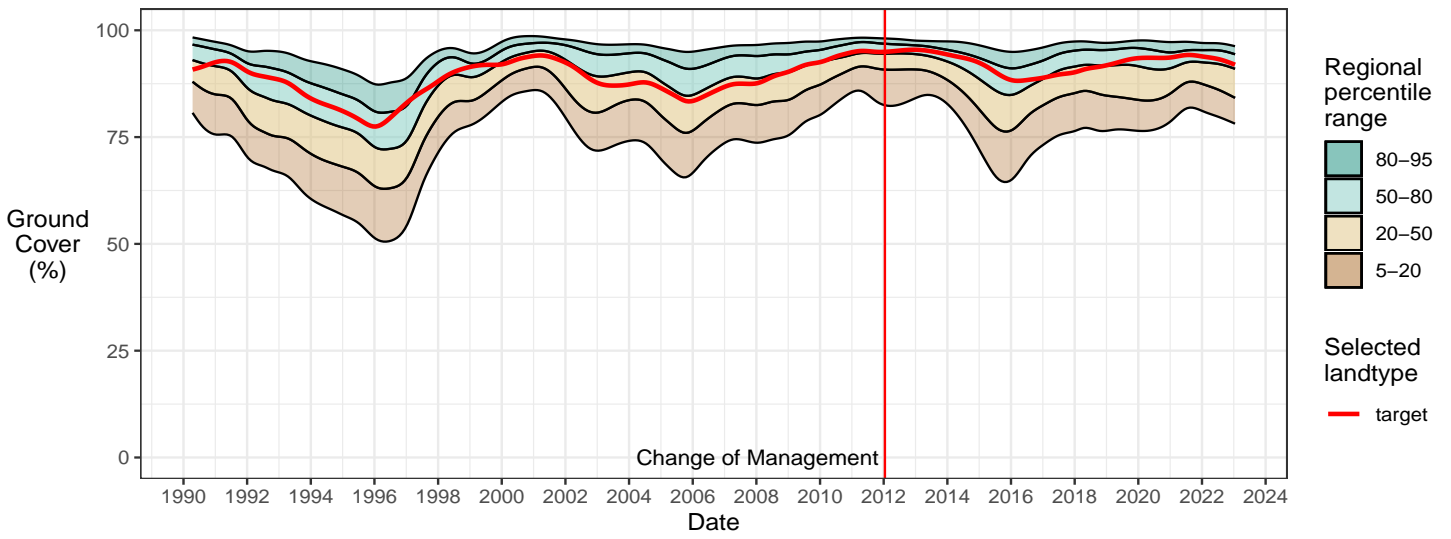


Cover values for dominant land type 1

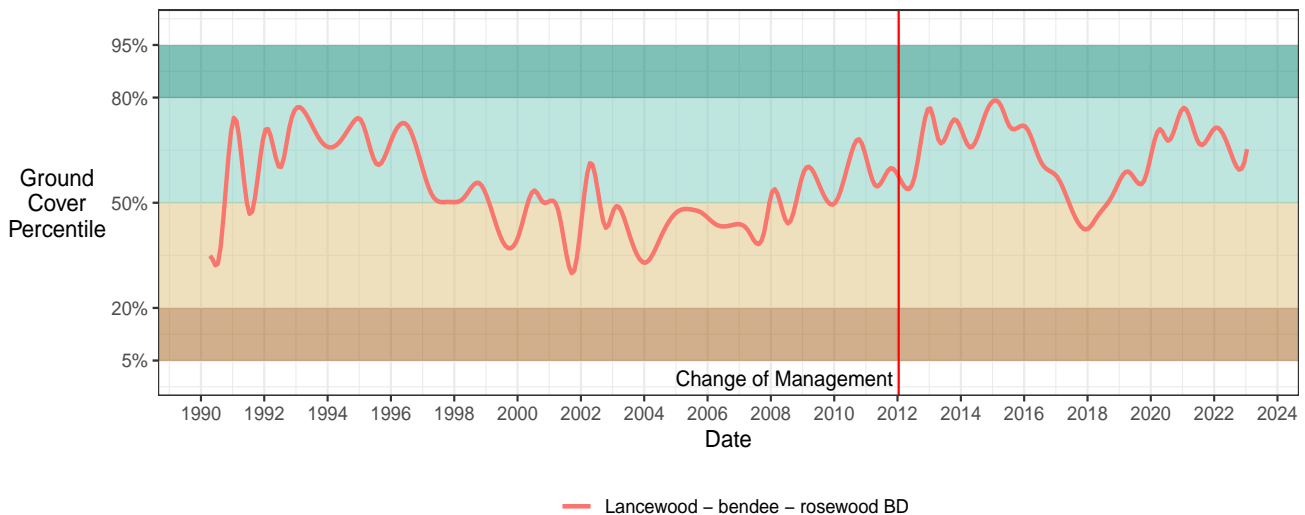
Regional land type comparison ... ground cover
Land type: Lancewood – bendee – rosewood BD



Regional land type comparison – percent ground cover
Land type: Lancewood – bendee – rosewood BD (BD12)

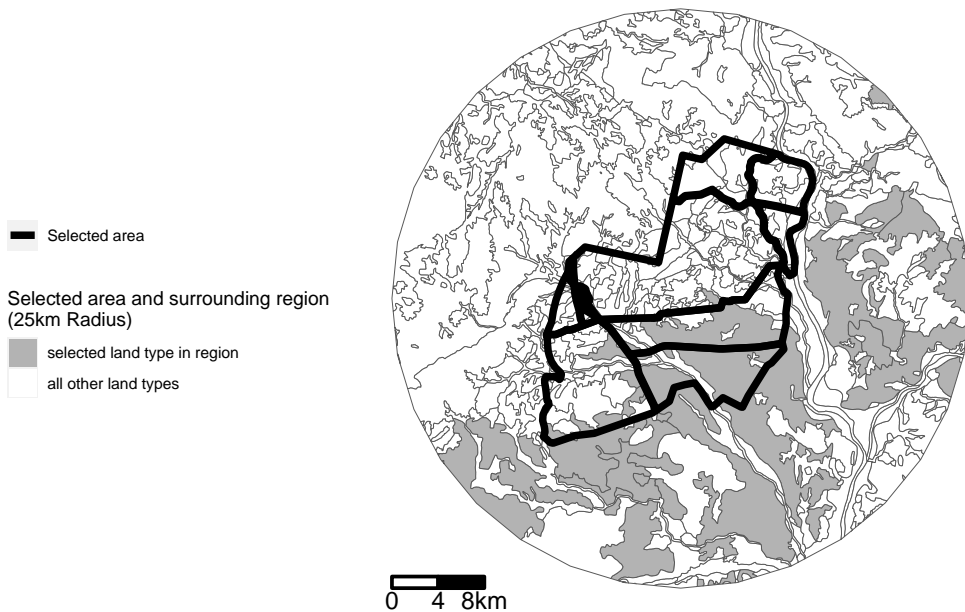


Ground cover ranking against surrounding region over time
Land type: Lancewood – bendee – rosewood BD (BD12)

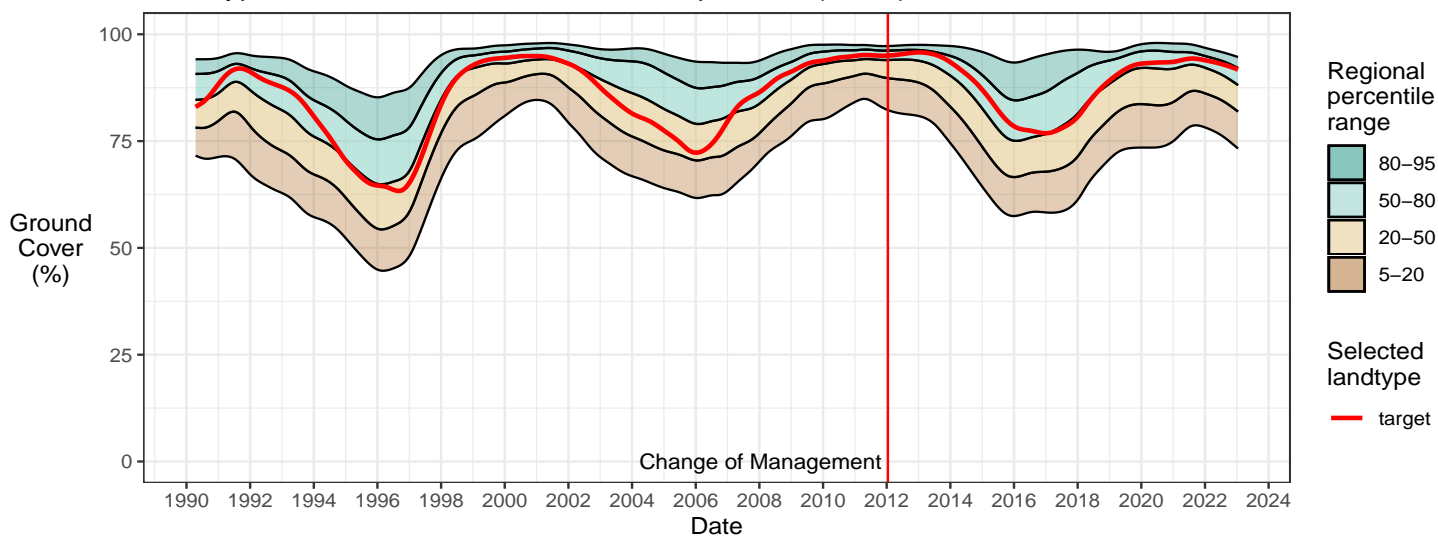


Cover values for dominant land type 2

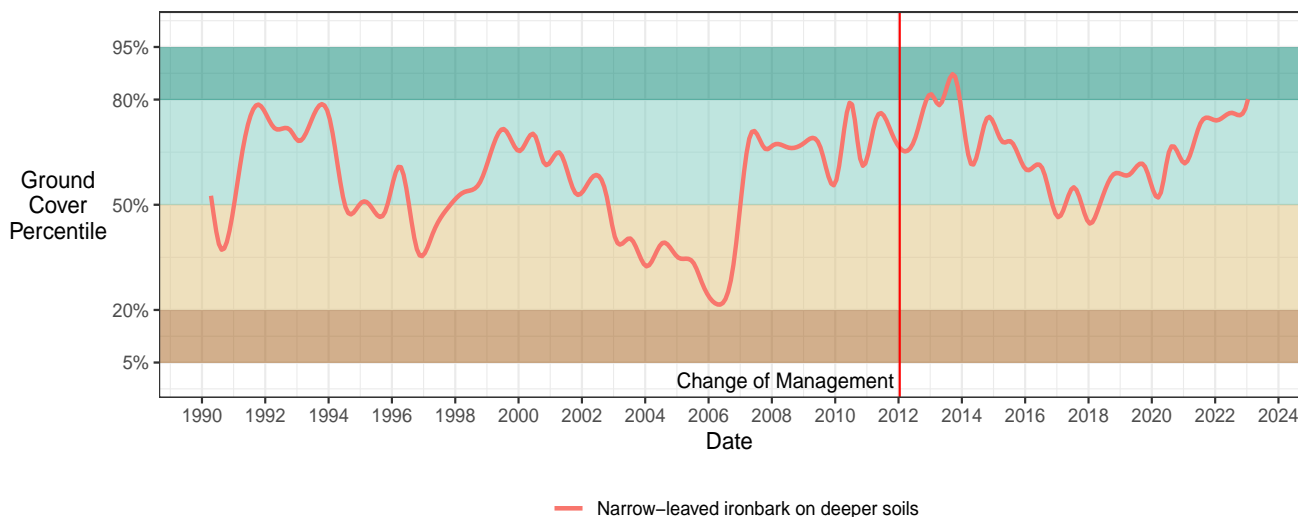
Regional land type comparison ... ground cover
Land type: Narrow-leaved ironbark on deeper soils



Regional land type comparison – percent ground cover
Land type: Narrow-leaved ironbark on deeper soils (BD14)

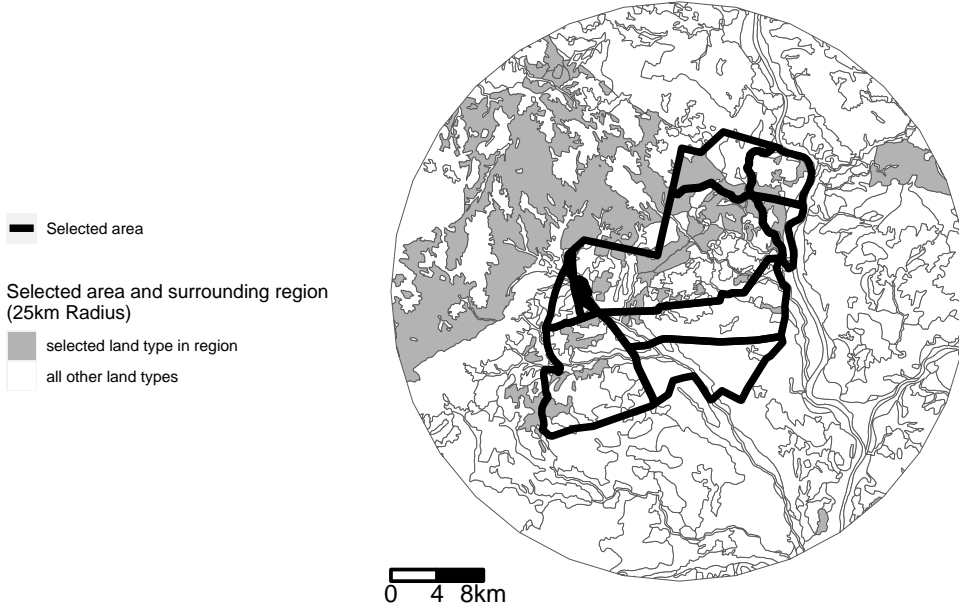


Ground cover ranking against surrounding region over time
Land type: Narrow-leaved ironbark on deeper soils (BD14)

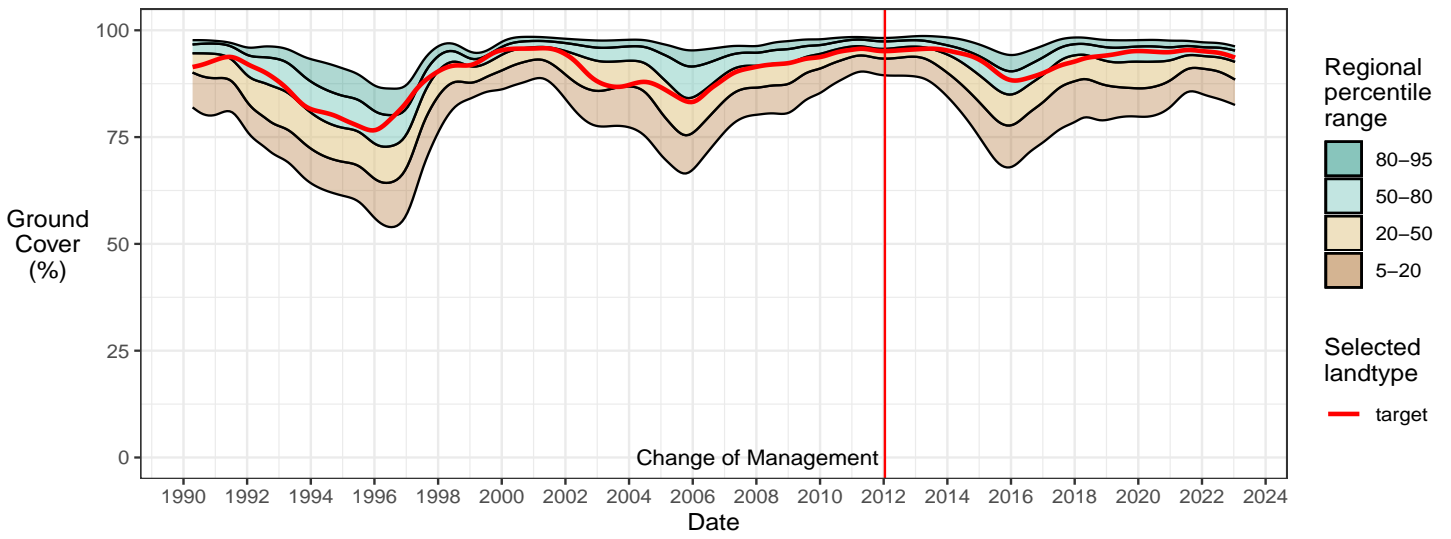


Cover values for dominant land type 3

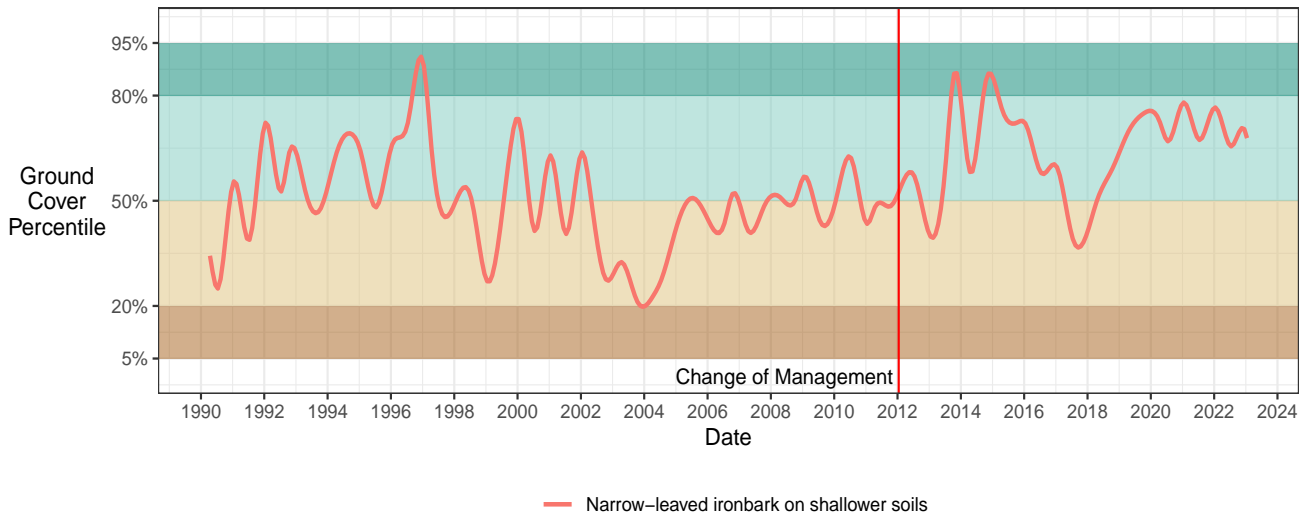
Regional land type comparison ... ground cover
Land type: Narrow-leaved ironbark on shallower soils



Regional land type comparison – percent ground cover
Land type: Narrow-leaved ironbark on shallower soils (BD15)

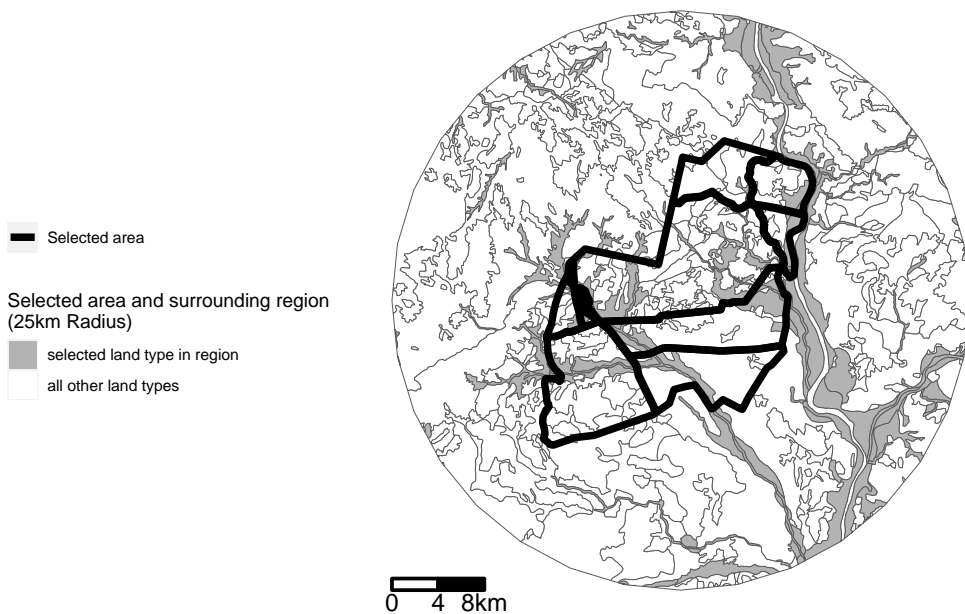


Ground cover ranking against surrounding region over time
Land type: Narrow-leaved ironbark on shallower soils (BD15)

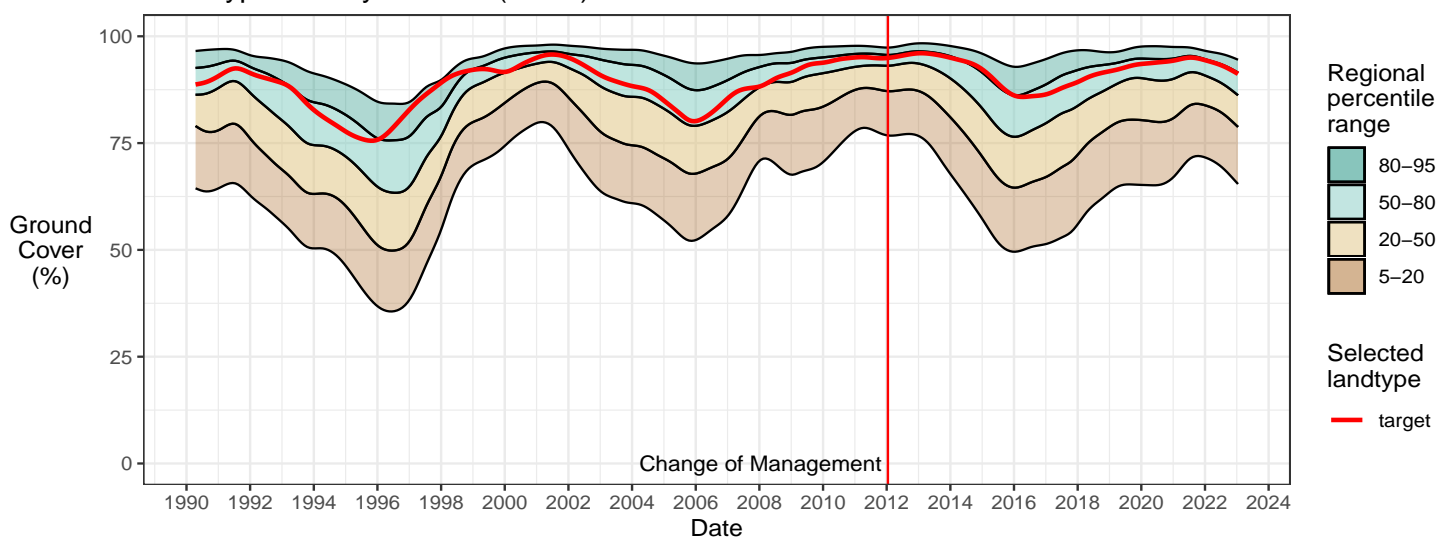


Cover values for dominant land type 4

Regional land type comparison ... ground cover
Land type: Loamy alluvials



Regional land type comparison – percent ground cover
Land type: Loamy alluvials (BD13)



Ground cover ranking against surrounding region over time
Land type: Loamy alluvials (BD13)

