

Introduction

This report presents a regional comparison of the ground cover levels for the dominant Grazing Land Management (GLM) land types on the selected Lot on Plan. The information about cover levels is generated from seasonal ground cover data derived from satellite imagery and calibrated by field measurements. If there are limited satellite data available for periods when there is too much cloud, ground cover is estimated based on the long term pattern of cover compared with the surrounding area. These estimates are indicated by the dotted line on the cover plot. Refer to the example information (below and on the following page) which explains the maps and graphs in the report.

Example: Ground cover - regional comparison - what the map shows

FORAGE REPORT: GROUND COVER - REGIONAL COMPARISON

<http://www.longpaddock.qld.gov.au/forage>

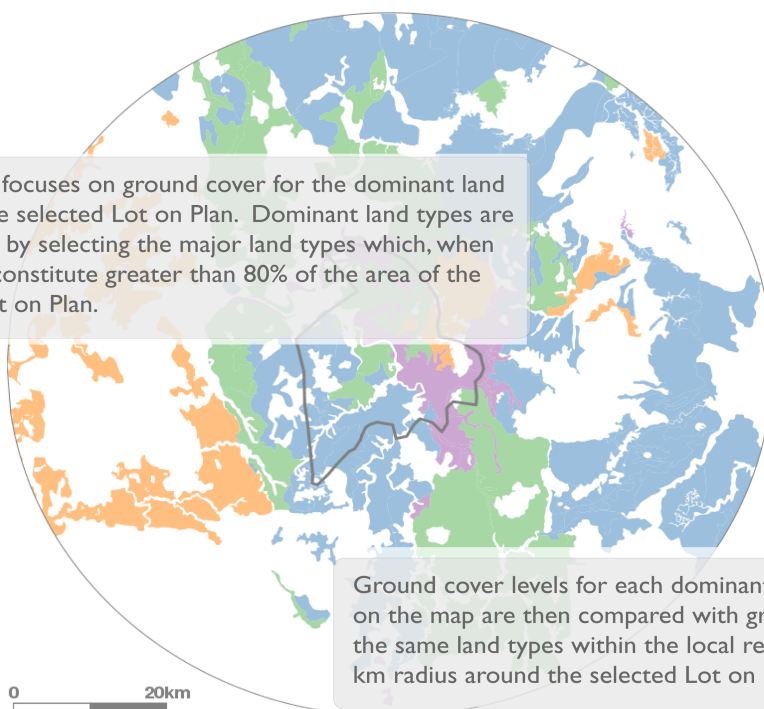
December 12, 2013

Lot on Plan: XXXX

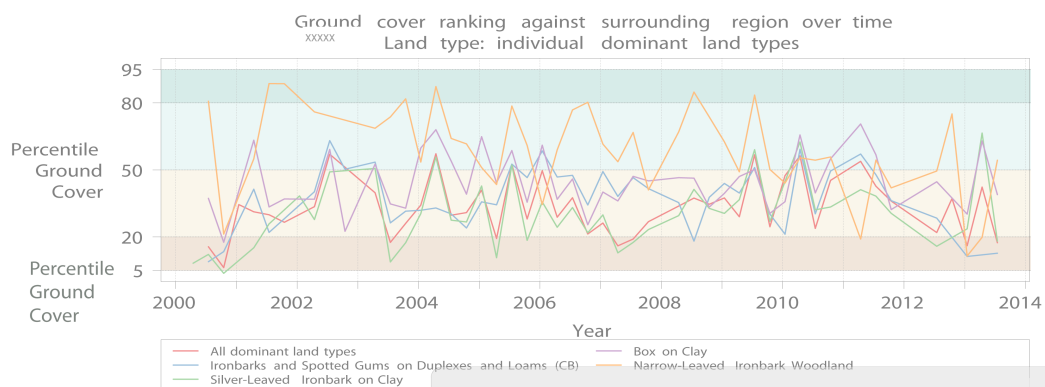
Label: test

Cover rankings per dominant land type

The report focuses on ground cover for the dominant land types on the selected Lot on Plan. Dominant land types are determined by selecting the major land types which, when combined, constitute greater than 80% of the area of the selected Lot on Plan.



Ground cover levels for each dominant land type identified on the map are then compared with ground cover levels for the same land types within the local region (defined by a 50 km radius around the selected Lot on Plan).



This graph shows, for the selected Lot on Plan, the ground cover for each dominant land type (coloured lines) ranked (as a percentile 0-100) against ground cover on the same land type within the local region.

Disclaimer

Limitation of liability: the State of Queensland, as represented by the Department of Science, Information Technology, Innovation and the Arts (DSITIA) gives no warranty in relation to the data (including without limitation, accuracy, reliability, completeness or fitness for a particular purpose). To the maximum extent permitted by applicable law, in no event shall DSITIA be liable for any special, incidental, indirect, or consequential damages whatsoever (including, but not limited to, damages for loss of profits or confidential or other information, for business interruption, for personal injury, for loss of privacy, for failure to meet any duty including of good faith or of reasonable care, for negligence, and for any other pecuniary or other loss whatsoever including, without limitation, legal costs on a solicitor own client basis) arising out of, or in any way related to, the use of or inability to use the data. © The State of Queensland, 2013.

FORAGE REPORT: GROUND COVER - REGIONAL COMPARISON

<http://www.longpaddock.qld.gov.au/forage>

March 1, 2017

Lot on Plan: 3MZ594

Label: Sample

Example: Ground cover - regional comparison graphs- what the graphs show

FORAGE REPORT: GROUND COVER - REGIONAL COMPARISON

<http://www.longpaddock.qld.gov.au/forage>

December 12, 2013




Lot on Plan: XXXX

Label: test

Cover values for dominant land type 1

Land type: Ironbarks and Spotted Gums on Duplexes and Loams (CB) (CB09)

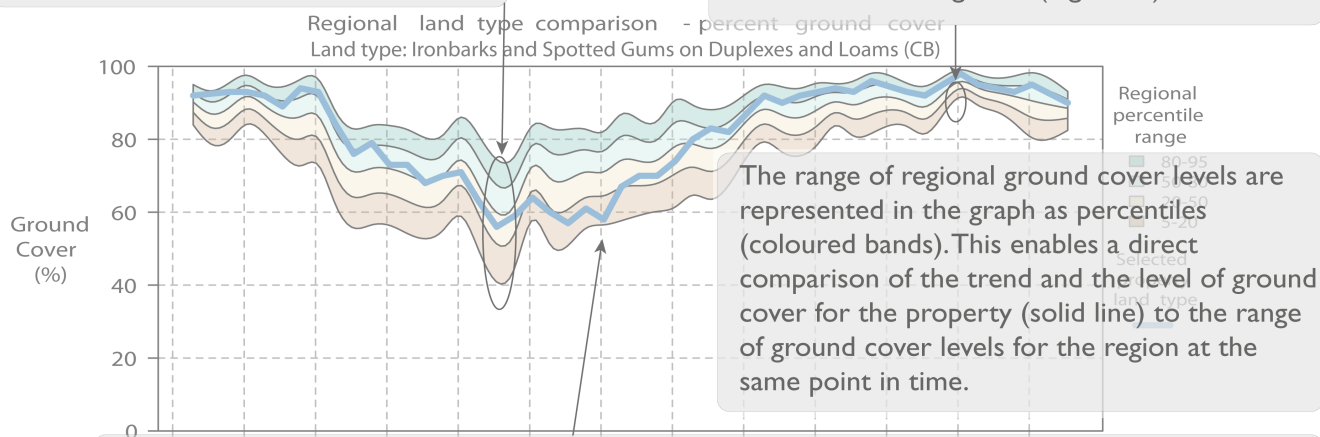
Selected property and surrounding region (50km radius)

-  Lot on Plan
-  Selected landtype in region
-  All other land types

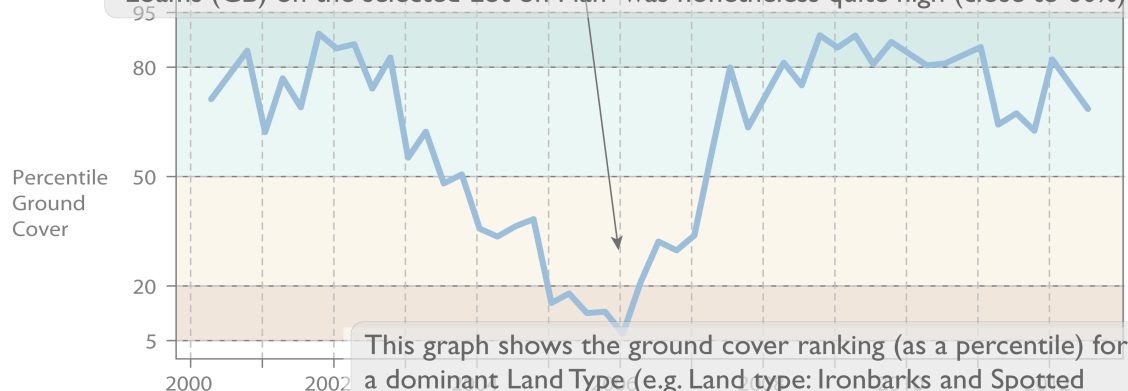


In drier years, the range of ground cover levels can vary greatly across a region. This is shown in the graph by wider (percentile) bands (e.g. winter-2004).

In wetter years the ground cover levels vary less across the region and are generally high. This is shown in the graph by narrower (percentile) bands, all closer together (e.g. 2011).



At this time (2006), ground cover on Land type: Ironbarks and Spotted Gums on Duplexes and Loams (CB) on the selected Lot on Plan ranked very low against ground cover on Ironbarks and Spotted Gums on Duplexes and Loams (CB) in the remainder of the region. Despite ranking low against the region, the actual ground cover level on Ironbarks and Spotted Gums on Duplexes and Loams (CB) on the selected Lot on Plan was nonetheless quite high (close to 60%).



This graph shows the ground cover ranking (as a percentile) for a dominant Land Type (e.g. Land type: Ironbarks and Spotted Gums on Duplexes and Loams (CB)) on the property against ground cover on the same Land Type within the local region.

FORAGE REPORT: GROUND COVER - REGIONAL COMPARISON

<http://www.longpaddock.qld.gov.au/forage>

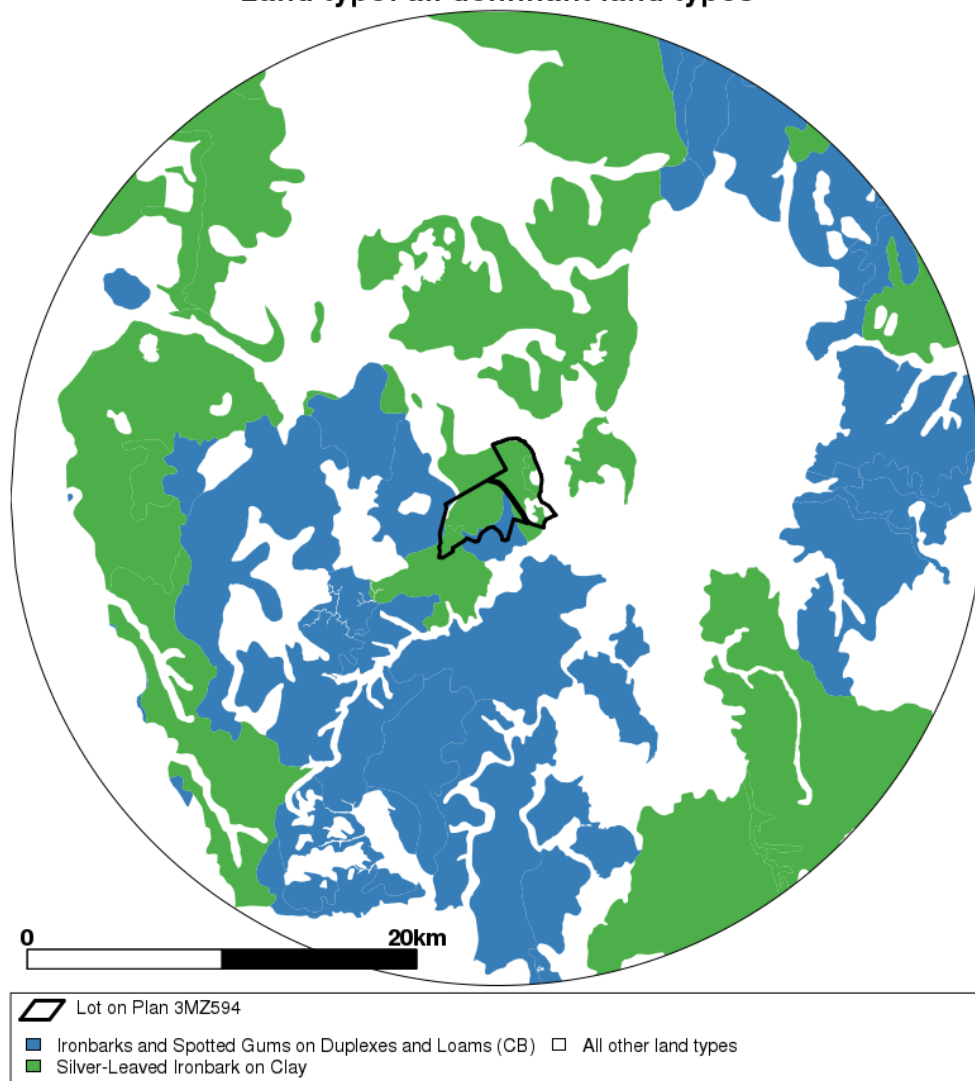
March 1, 2017

Lot on Plan: 3MZ594

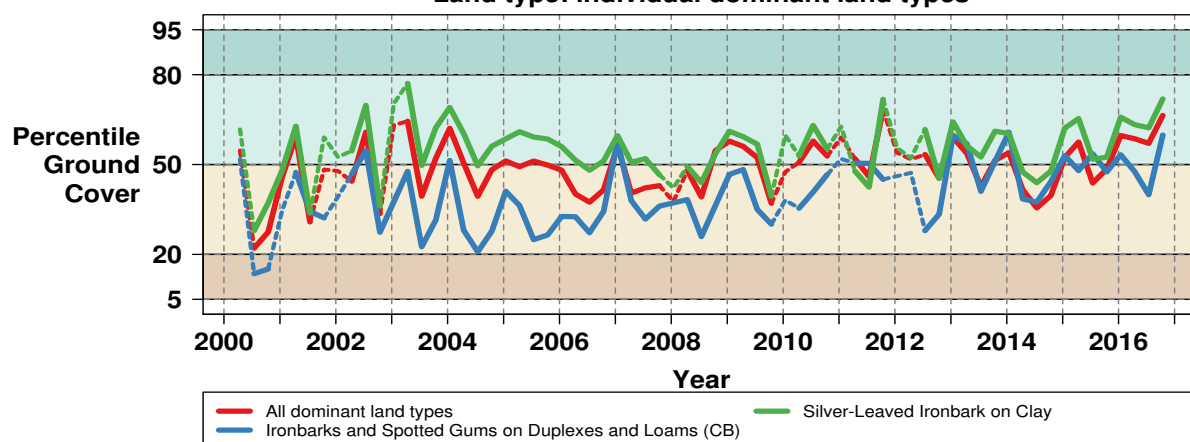
Label: Sample

Cover rankings per dominant land type

Lot on Plan compared with the local region Land type: all dominant land types



Ground cover ranking against surrounding region over time Land type: individual dominant land types



Disclaimer

Limitation of liability: the State of Queensland, as represented by the Department of Science, Information Technology and Innovation (DSITI) gives no warranty in relation to the data (including without limitation, accuracy, reliability, completeness or fitness for a particular purpose). To the maximum extent permitted by applicable law, in no event shall DSITI be liable for any special, incidental, indirect, or consequential damages whatsoever (including, but not limited to, damages for loss of profits or confidential or other information, for business interruption, for personal injury, for loss of privacy, for failure to meet any duty including of good faith or of reasonable care, for negligence, and for any other pecuniary or other loss whatsoever including, without limitation, legal costs on a solicitor own client basis) arising out of, or in any way related to, the use of or inability to use the data.

©The State of Queensland, 2017.

FORAGE REPORT: GROUND COVER - REGIONAL COMPARISON

<http://www.longpaddock.qld.gov.au/forage>

March 1, 2017




Lot on Plan: 3MZ594

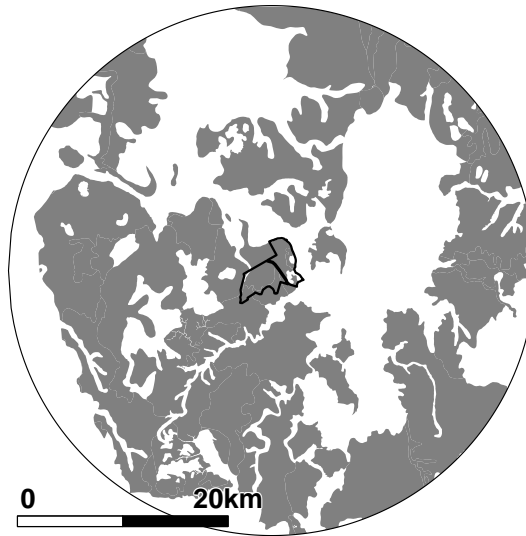
Label: Sample

Cover values for all dominant land types

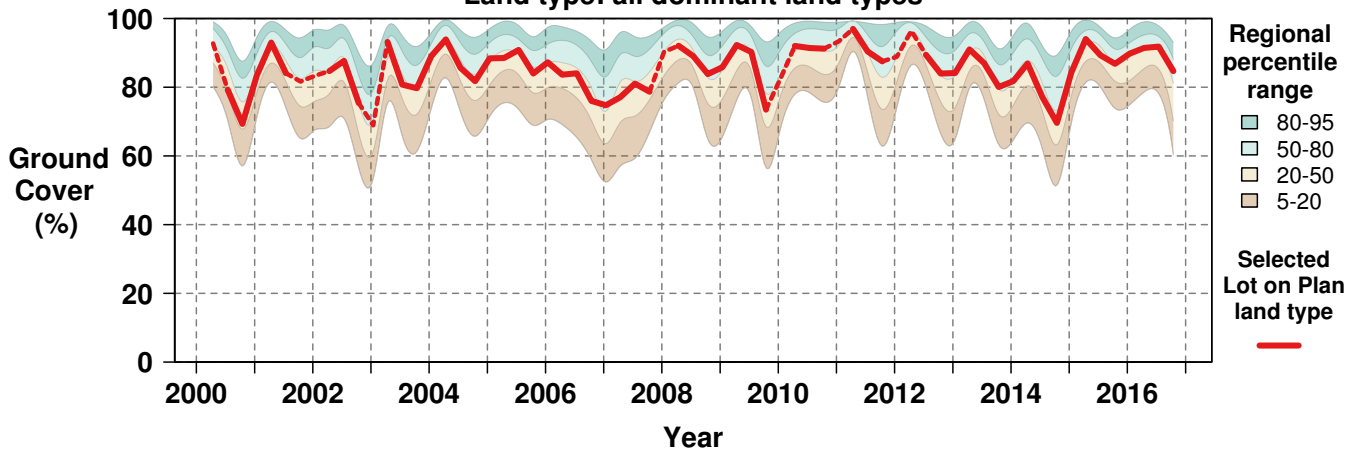
Regional land type comparison – ground cover Land type: all dominant land types

Selected property and surrounding region (25km radius)

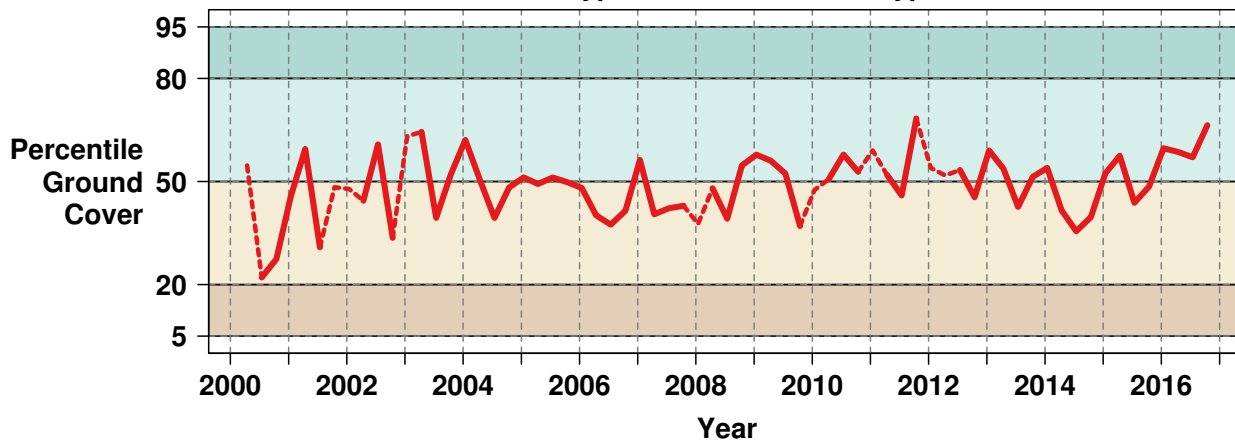
-  Lot on Plan
-  Selected landtype in region
-  All other land types



Regional land type comparison - percent ground cover Land type: all dominant land types



Ground cover ranking against surrounding region over time Land type: all dominant land types



FORAGE REPORT: GROUND COVER - REGIONAL COMPARISON

<http://www.longpaddock.qld.gov.au/forage>

March 1, 2017




Lot on Plan: 3MZ594

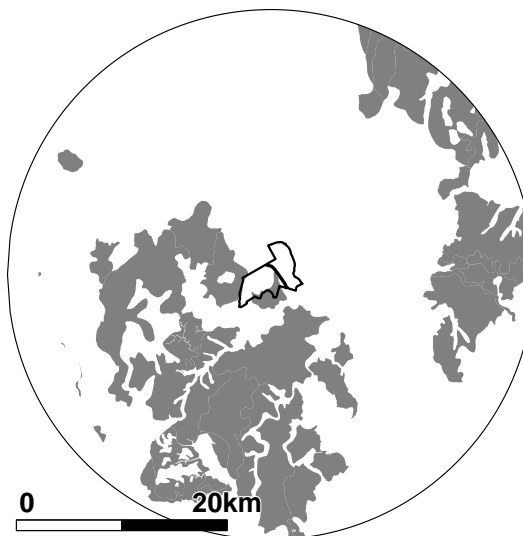
Label: Sample

Cover values for dominant land type 1

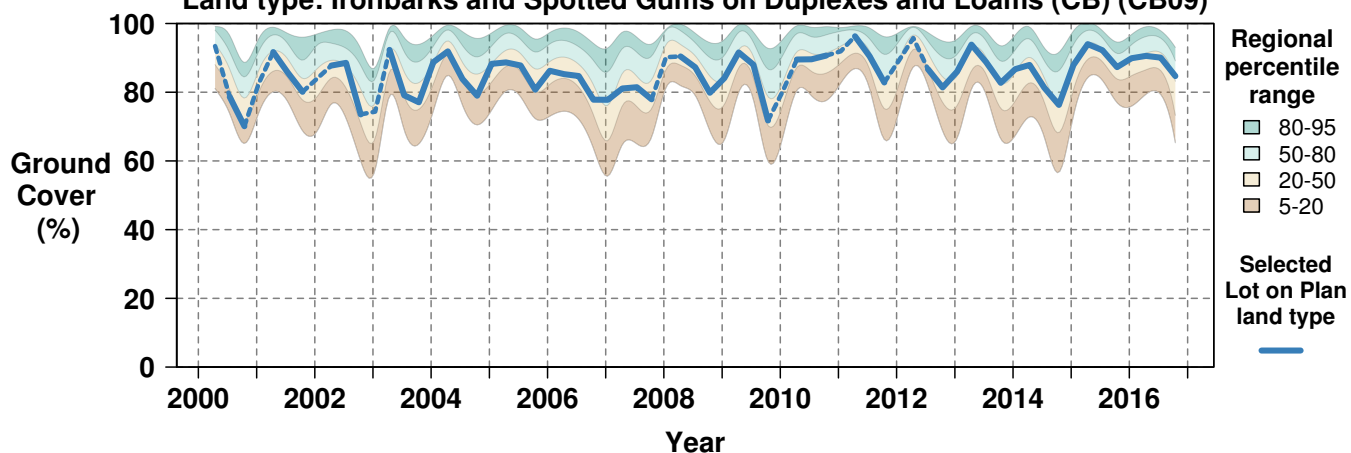
Regional land type comparison – ground cover Land type: Ironbarks and Spotted Gums on Duplexes and Loams (CB) (CB09)

Selected property and surrounding region (25km radius)

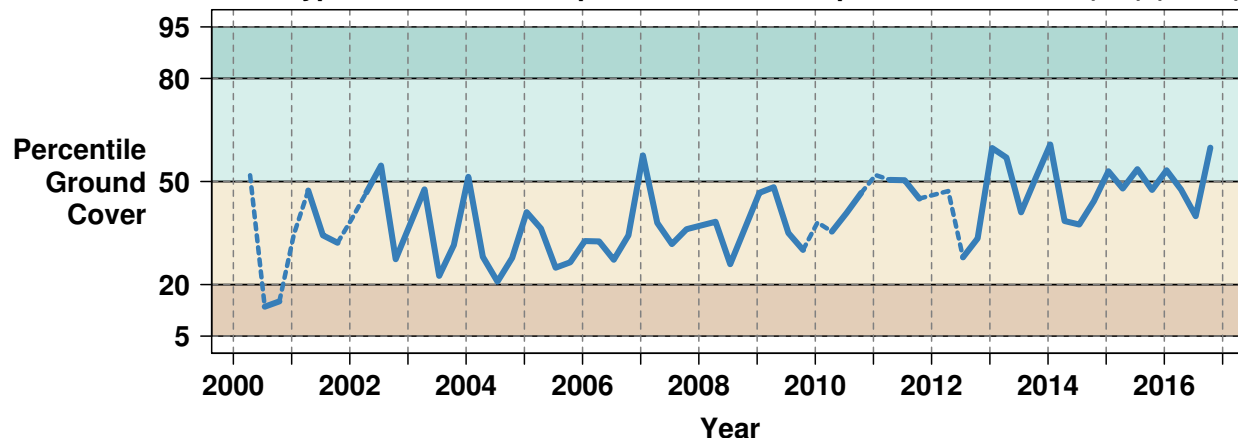
-  Lot on Plan
-  Selected landtype in region
-  All other land types



Regional land type comparison - percent ground cover Land type: Ironbarks and Spotted Gums on Duplexes and Loams (CB) (CB09)



Ground cover ranking against surrounding region over time Land type: Ironbarks and Spotted Gums on Duplexes and Loams (CB) (CB09)



FORAGE REPORT: GROUND COVER - REGIONAL COMPARISON

<http://www.longpaddock.qld.gov.au/forage>

March 1, 2017

Lot on Plan: 3MZ594




Label: Sample

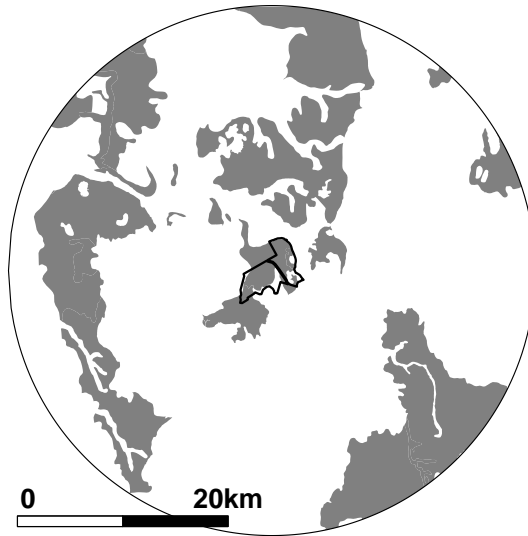
Cover values for dominant land type 2

Regional land type comparison – ground cover

Land type: Silver-Leaved Ironbark on Clay (IB16)

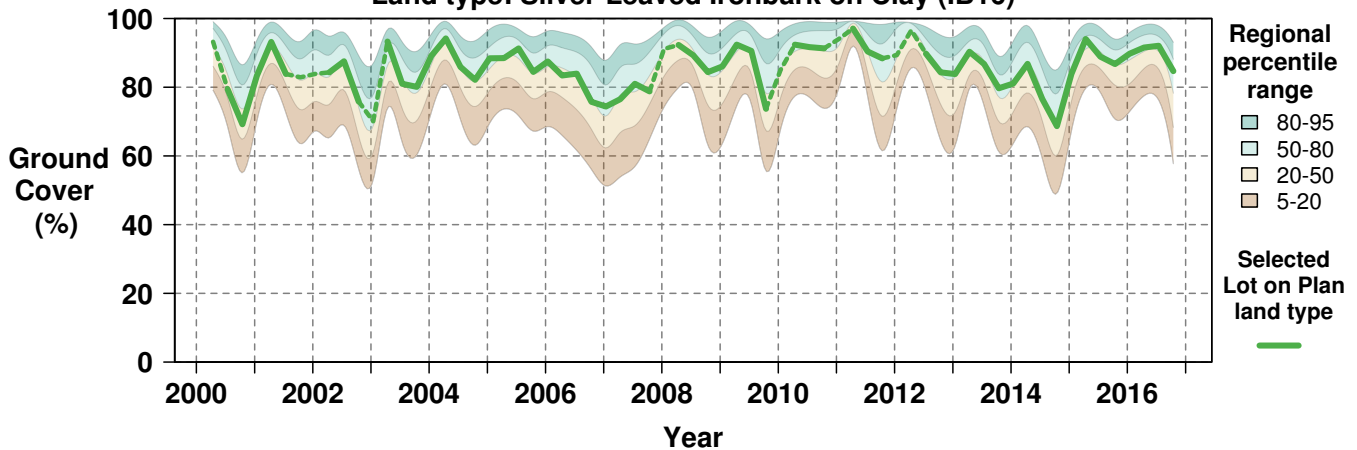
Selected property and surrounding region (25km radius)

-  Lot on Plan
-  Selected landtype in region
-  All other land types



Regional land type comparison - percent ground cover

Land type: Silver-Leaved Ironbark on Clay (IB16)



Ground cover ranking against surrounding region over time

Land type: Silver-Leaved Ironbark on Clay (IB16)

