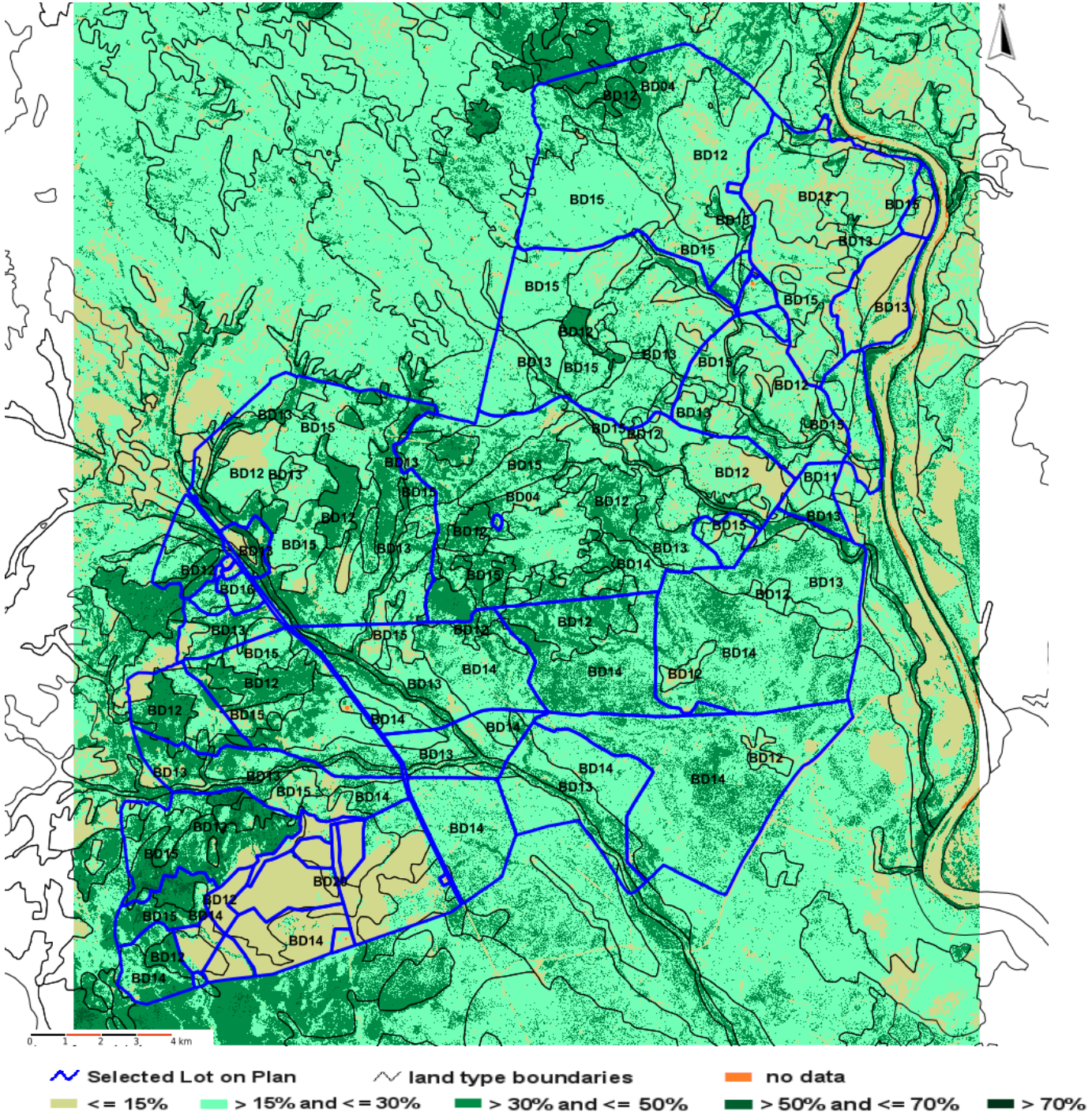


Introduction

This report presents the Foliage Projective Cover (FPC) information obtained from satellite data for the selected Lot on Plan. The FPC map shows both the different classes of FPC and the land type information for the area selected. Areas with greater than 15 percent FPC are classed as woody vegetation cover, whereas areas with less than 15 percent FPC are classed as non-woody vegetation cover. Users may be more familiar with tree density being expressed as tree basal area (TBA). As a guide, for mature tree communities, FPC thresholds of 15, 30 and 70 per cent equate to tree basal area of approximately 6, 12 and 32 m²/hectare respectively.

Note: FPC values in some areas (i.e. coastal and sub-coastal) may be inflated due to the continued green pasture signal from 'back-to-back' wetter years, as well as higher woody growth (see annual plus extended wet and dry rainfall maps - <https://www.longpaddock.qld.gov.au/rainfall-poster/>). Following extended dry periods (with a reduced green pasture signal), FPC values are likely to be closer to on-ground measurements.

FPC map 2023



Disclaimer

Limitation of liability: the State of Queensland, as represented by the Department of the Environment, Tourism, Science and Innovation (DETSI) gives no warranty in relation to the data (including without limitation, accuracy, reliability, completeness or fitness for a particular purpose). To the maximum extent permitted by applicable law, in no event shall DETSI be liable for any special, incidental, indirect, or consequential damages whatsoever (including, but not limited to, damages for loss of profits or confidential or other information, for business interruption, for personal injury, for loss of privacy, for failure to meet any duty including of good faith or of reasonable care, for negligence, and for any other pecuniary or other loss whatsoever including, without limitation, legal costs on a solicitor own client basis) arising out of, or in any way related to, the use of or inability to use the data. ©The State of Queensland, 2026.

Summary of FPC for land types

This table indicates the area and **percentage area** of FPC for each land type on the selected Lot on Plan. Five FPC classes are shown (FPC<=15% , FPC>15% and <=30%, FPC>30% and <=50%, FPC>50% and <=70% and FPC>70%).

Expected land type (for land types > 1 hectare)	Land type area (ha)	FPC <=15 ha (%)	FPC 15-30 ha (%)	FPC 30-50 ha (%)	FPC 50-70 ha (%)	FPC >70 ha (%)
BD12 Lancewood - bendee - rosewood BD	10,514	2,194 (20.9)	5,170 (49.2)	2,995 (28.5)	155 (1.5)	<1 (<1)
BD14 Narrow-leaved ironbark on deeper soils	8,522	879 (10.3)	5,433 (63.8)	2,197 (25.8)	13 (<1)	<1 (<1)
BD15 Narrow-leaved ironbark on shallower soils	8,403	940 (11.2)	5,620 (66.9)	1,798 (21.4)	45 (<1)	<1 (<1)
BD13 Loamy alluvials	7,411	849 (11.5)	3,660 (49.4)	2,767 (37.3)	134 (1.8)	<1 (<1)
BD04 Box and napunyah	1,155	95 (8.2)	627 (54.3)	430 (37.3)	3 (<1)	<1 (<1)
BD20 Yellowjacket with other eucalypts	792	510 (64.4)	221 (27.8)	61 (7.7)	<1 (<1)	<1 (<1)
BD16 Ranges	359	61 (17.1)	159 (44.3)	138 (38.3)	1 (<1)	<1 (<1)
BD11 Goldfields country - red soils	200	53 (26.7)	136 (67.9)	11 (5.4)	<1 (<1)	<1 (<1)
AL10 Wetland	7	<1 (1.4)	<1 (5.0)	6 (90.3)	<1 (3.2)	<1 (<1)
AL09 Water	5	3 (63.2)	1 (23.6)	<1 (13.3)	<1 (<1)	<1 (<1)
BD05 Box country BD	2	<1 (<1)	2 (91.1)	<1 (8.9)	<1 (<1)	<1 (<1)
Total	37,369	5,585 (14.9)	21,029 (56.3)	10,404 (27.8)	352 (0.9)	0 (0.0)

Data sources

The land type information is based on "SIRQRY.DAF_QLD_GLM_landtype_V7" dataset. The Foliage Projective Cover (FPC) image has a 10 metre resolution and is developed from the Sentinel satellite imagery by the Remote Sensing Centre (RSC), Department of the Environment, Tourism, Science and Innovation (DETSI). The FPC map will be updated periodically using information on regrowth and clearing data by RSC. The metadata of the FPC can be found on the Queensland Spatial Catalogue website: <https://qldspatial.information.qld.gov.au/catalogue/custom/search.page?q=fpc>. Further information on vegetation management for your property can be requested from the following website: <https://www.qld.gov.au/environment/land/management/vegetation/maps/map-request/vegetation-map-request-form>.