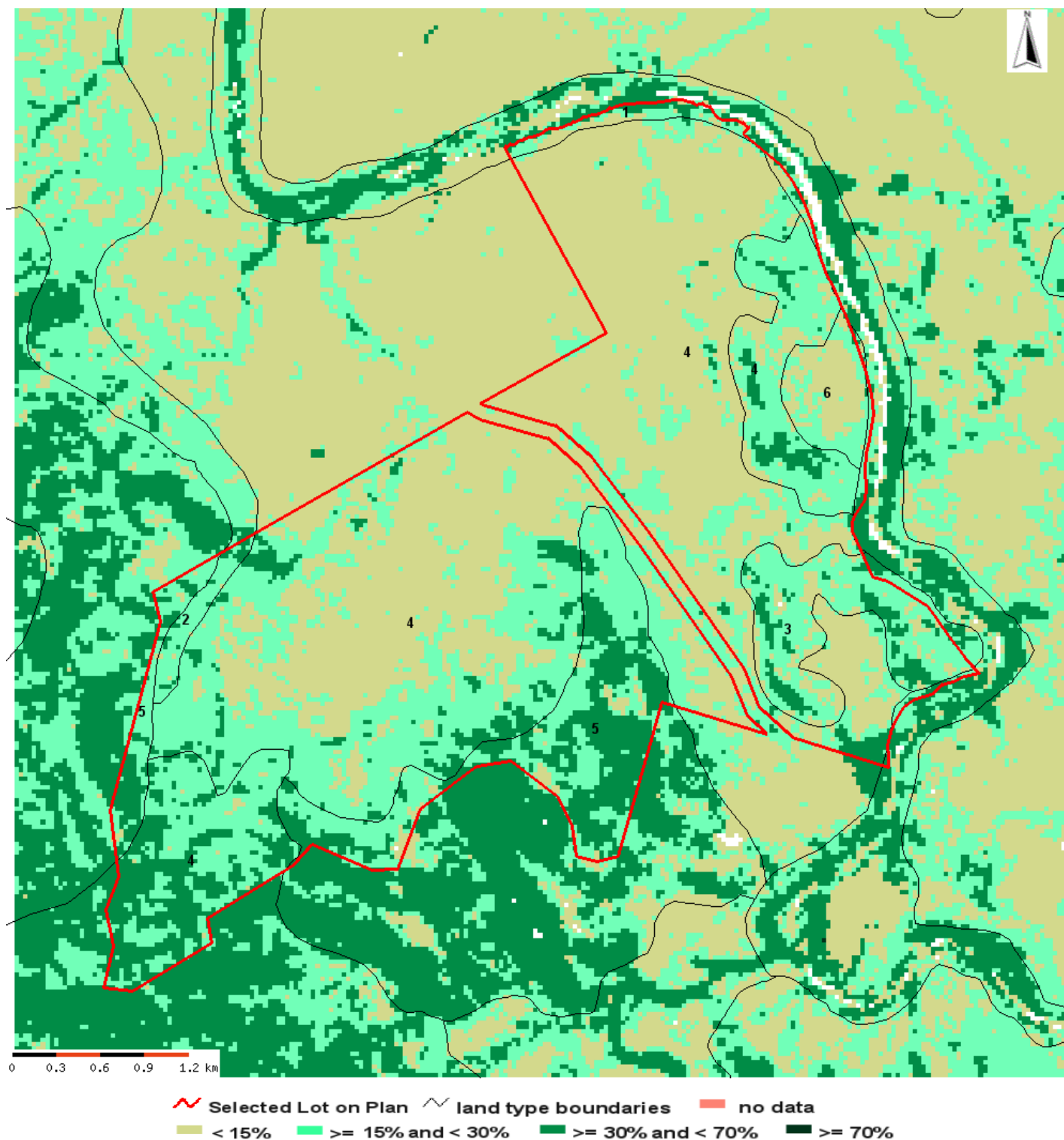


Introduction

This report presents the Foliage Projective Cover (FPC) information obtained from satellite data for the selected Lot on Plan. The FPC map shows both the different classes of FPC and the land type information for the area selected. Areas with greater than 15 percent FPC are classed as woody vegetation cover, whereas areas with less than 15 percent FPC are classed as non-woody vegetation cover. Users may be more familiar with tree density being expressed as tree basal area (TBA). As a guide, for mature tree communities, FPC thresholds of 15, 30 and 70 per cent equate to tree basal area of approximately 6, 12 and 32 m²/hectare respectively.

FPC map 2014



Disclaimer

Limitation of liability: the State of Queensland, as represented by the Department of Science, Information Technology and Innovation (DSITI) gives no warranty in relation to the data (including without limitation, accuracy, reliability, completeness or fitness for a particular purpose). To the maximum extent permitted by applicable law, in no event shall DSITI be liable for any special, incidental, indirect, or consequential damages whatsoever (including, but not limited to, damages for loss of profits or confidential or other information, for business interruption, for personal injury, for loss of privacy, for failure to meet any duty including of good faith or of reasonable care, for negligence, and for any other pecuniary or other loss whatsoever including, without limitation, legal costs on a solicitor own client basis) arising out of, or in any way related to, the use of or inability to use the data.

©The State of Queensland, 2017.

Summary of FPC for land types

This table indicates the area and **percentage area** of FPC for each land type on the selected Lot on Plan. Four FPC classes are shown (FPC<15%, FPC 15-30%, FPC 30-70% and FPC>70%)

Expected land type (for land types > 1 hectare)	Code	Land type area (ha)	FPC <15 ha (%)	FPC 15-30 ha (%)	FPC 30-70 ha (%)	FPC >70 ha (%)
04 Silver-leaved ironbark on clay	IB16	1255	686 (54.7)	458 (36.5)	111 (8.9)	< 1 (<1)
05 Ironbarks and spotted gums on duplexes and loams (CB)	CB09	197	10 (4.9)	99 (50.5)	88 (44.6)	< 1 (<1)
03 Narrow-leaved ironbark on granite	IB14	94	20 (21.5)	58 (61.6)	16 (17.0)	< 1 (<1)
06 Box on clay	IB05	41	23 (56.4)	17 (42.1)	< 1 (1.5)	< 1 (<1)
01 Blue gum flats (CB)	CB02	27	6 (22.5)	12 (45.7)	9 (31.8)	< 1 (<1)
02 Ironbarks and bloodwoods on non-cracking clays (IB)	IB10	16	< 1 (2.2)	12 (76.9)	3 (20.9)	< 1 (<1)
Total		1631	746 (45.7)	657 (40.3)	228 (13.9)	0 (0)

Data sources

The land type information is based on "SIRQRY.QLD-GLM-LANDTYPE-RLL-V2" dataset. The FPC information (product id: cht) is derived from the satellite data which was developed by Remote Sensing Centre, Department of Science, Information Technology and Innovation (DSITI).